

# **MASSER CREATOR PRO**

## **User manual PC-software V3.50**

**17.09.2012**

## 1. INTRODUCTION

This document is a User's Manual for the Masser Creator Pro PC software.

**Masser Creator Pro** is a PC - program which works in Microsoft XP / Vista and Win7. Masser Creator Pro is a licensed product. Creator Pro is a tool for creating data collection programs for Masser Computer Calipers

**Masser Creator** is PC – program which is used to download collected data and can be used for loading new programs / applications. Creator is a freeware program.

**Caliper driver** is caliper firmware which is loaded (normally preloaded in the factory) with the Masser Creator. Caliper driver works as a user interface in the caliper.

**Data collection program (creator program/application)** is defined in a full licensed Masser Creator Pro with max 99 fields of data. This creator program is loaded into the caliper via a Bluetooth from the Masser Creator PC-program or by Masser Creator PC-program.

The program can be used two ways:

### 1. User defined data collection programs

- The user defines on the PC, what kind of data he wants to collect. Thereafter the program is downloaded into the caliper.
- After the fieldwork the gathered data is transferred to the PC, where the data is stored in Excel or Text-format.

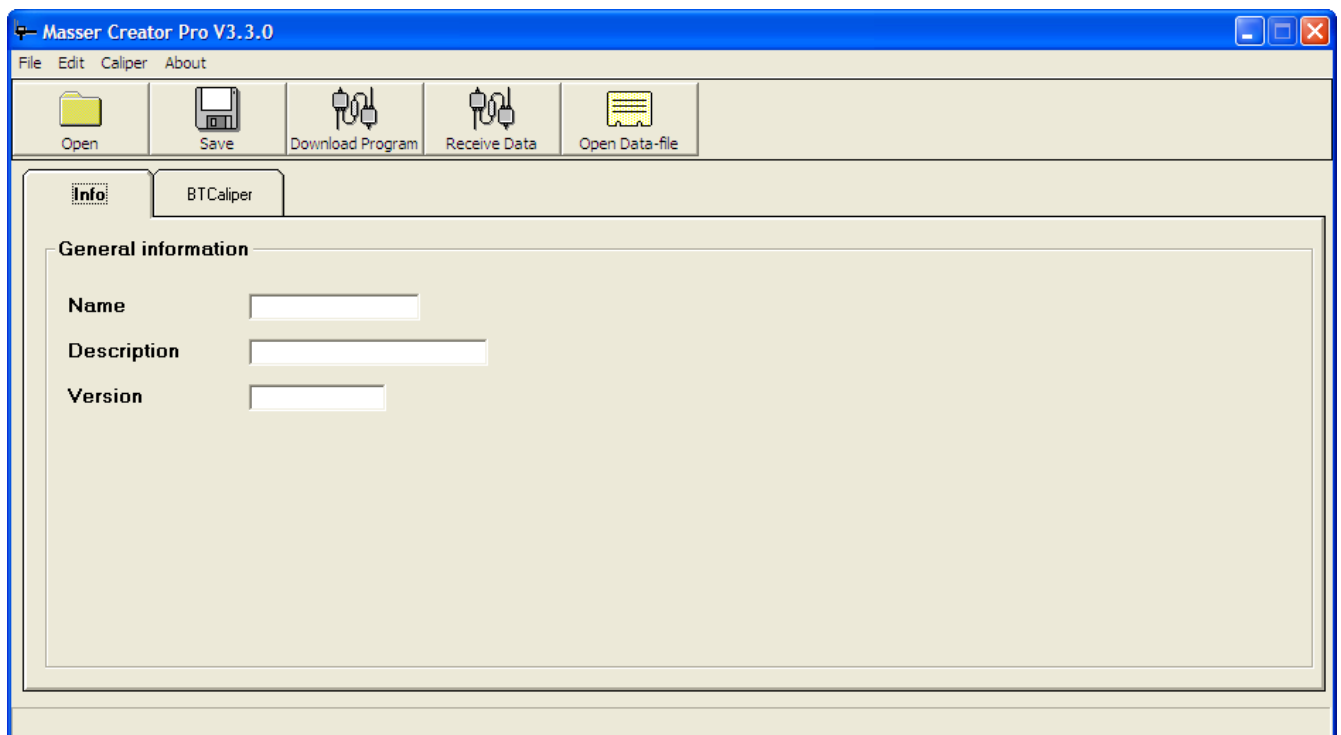
### 2. Using tailored data collection and data analyzing / report programs

- User defines the report (or transfer file) and defines the way how the data should be analyzed and computed. Masser makes a predefined data collection program and a report module which can run in the PC.

## 2. Masser Creator Pro

Start the program by opening Masser Creator Pro from *Start->Programs->Masser Creator Pro*. When the program starts, empty main screen is opened.

This window is a Creator Pro main window where the creator data collection program can be created. There are two main tabs, Info and BTCaliper which constitute the developer program.



Menu functions:



|                  |                                       |
|------------------|---------------------------------------|
| Open             | Open program                          |
| Save             | Save created program                  |
| Download program | Download program to caliper           |
| Receive data     | Receive data from caliper             |
| Open Data-file   | Open previously transferred data-file |

### 3. Creating a program

When starting to create a new creator program, first enter the program name, description and version number to Info tab.

When the general information is fed, the programming can start. Select BTCaliper tab to start creating the program.

The programming starts by defining the following data for each used field:

**Name** Name of the field, max 10 characters. The text is shown on the calipers display.

**Type** The data type of the field.

**Data types:**

**NUM** Numeric data

**TXT** Text data, selection is made from selection list

**DIA** Diameter measurement

|                  |   |
|------------------|---|
| <b>Length</b>    | Number of characters, includes the possible decimal point if decimals are defined.  |
| <b>Des</b>       | Number of decimals(optional). Number of decimals should be at least 2 characters shorter than the total length of the field.  |
| <b>Increment</b> | Numeric field increment value. The numeric data will be incremented automatically according to this value for each tree.  |
| <b>Default</b>   | Default value. If empty, the default will be the data of the previous tree  |
| <b>Multiple</b>  | <p>In the cases when the needed amount of the same kind of data fields is unknown (diameters, heights...), the user can define multiple data fields to one multiple group. The multiple data field group is created by defining the maximum amount of data fields and setting multiple parameters to 1 for each data field.</p> <p>Multiple data fields are asked until the last data field in multiple group is registered or the measurement sequence is stopped by registering OK (11-20 mm) diameter.</p> |

#### **Show in measurement**

With this parameter the user can set if the data field value is shown on caliper display during measurements. The maximum number of data fields on the caliper display is 4.

#### **Ask in meas. sequence**

With this parameter the user can define if the data field will be asked for each record. YES = the data will be asked for each record, NO = the data will be fed in edit mode.

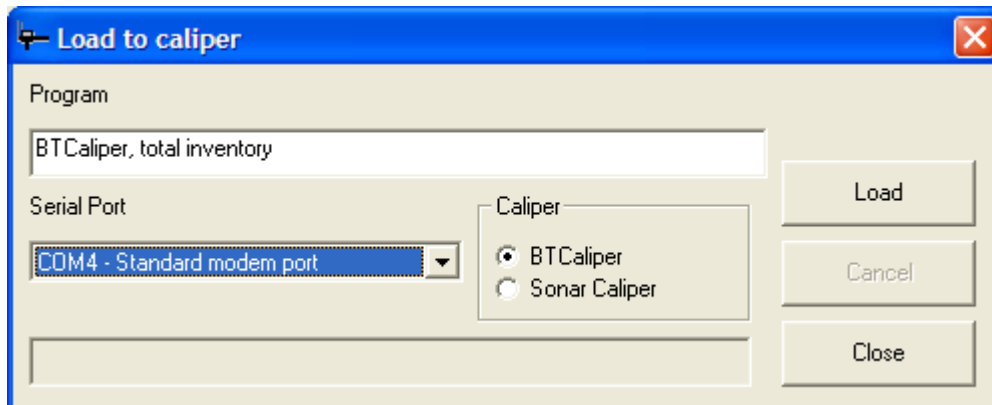
**Lists**      TXT field selection list values (example: PINE; SPRUCE,BIRCH)

When the program is created. Save the created program to default folder C:\ProgramFiles\Masser\Masser Creator Pro 3.30\md3 and transfer it to caliper.

## 4. Downloading program to caliper

Open the program to Creator Pro

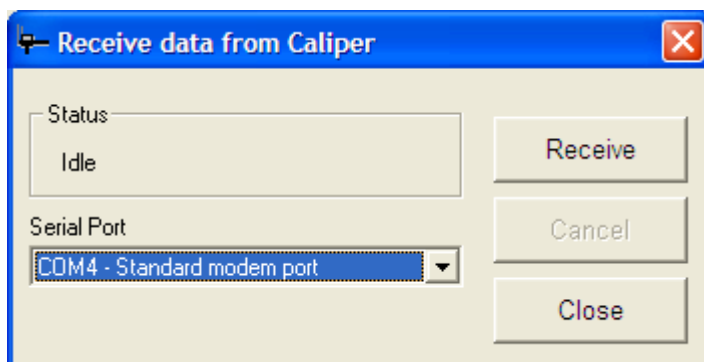
Set the caliper ready to receive new program by selecting **Transfer** from caliper and click **Download program** button, the following window opens:



Select correct COM port (Bluetooth port) and click **Load** button to start downloading new program to caliper. When the program downloading is finished the caliper is ready to use.

## 5. Downloading data from caliper

Set the caliper ready to send data by selecting **Transfer** from caliper and click **Receive Data** button, the following window opens:



Select correct COM port (Bluetooth port) and click **Receive** button to start receiving data from caliper.

When data transfer is ready the data will be shown on the display.

|    | A        | B       | C       | D      | E        |
|----|----------|---------|---------|--------|----------|
| 1  | TREE NO. | SPECIES | QUALITY | HEIGHT | DIAMETER |
| 2  | 12001    | PINE    | A1      | 0      | 314      |
| 3  | 12002    | PINE    | A1      | 0      | 288      |
| 4  | 12003    | PINE    | A1      | 0      | 241      |
| 5  | 12004    | PINE    | A1      | 0      | 277      |
| 6  | 12005    | PINE    | A1      | 20.0   | 216      |
| 7  | 12006    | PINE    | A1      | 0      | 261      |
| 8  | 12007    | PINE    | A1      | 0      | 201      |
| 9  | 12008    | PINE    | A1      | 0      | 173      |
| 10 | 12009    | PINE    | A1      | 0      | 220      |

Save TXT  
Save Excel  
Save ddf

Save data in .txt format  
Save data in Excel  
Save data in .ddf caliper raw data format. These types of files can be opened later in Creator Pro software.  
Print data

Print  
Close