

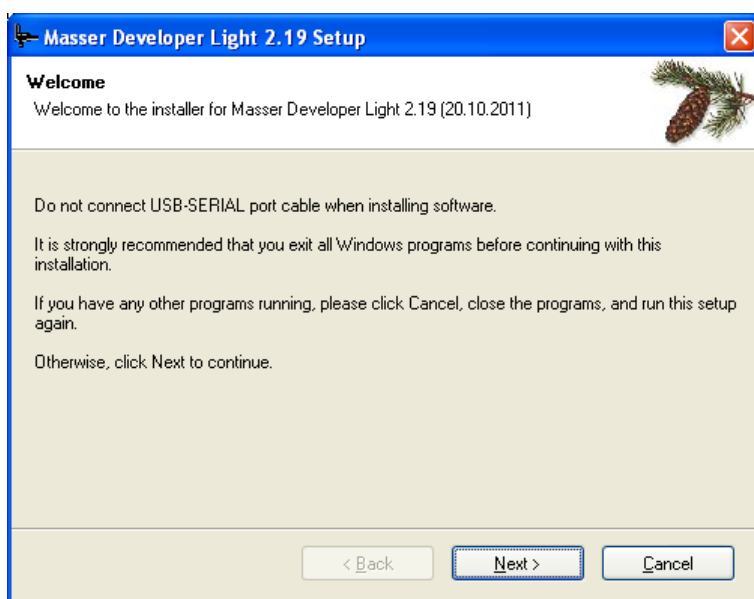
MASSER DEVELOPER LIGHT

USER MANUAL V2.5

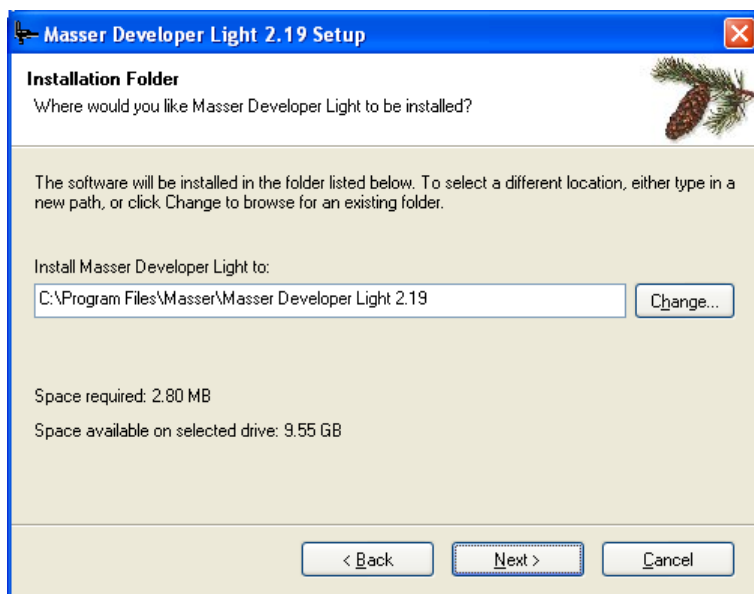
PC SOFTWARE

SOFTWARE INSTALLATION

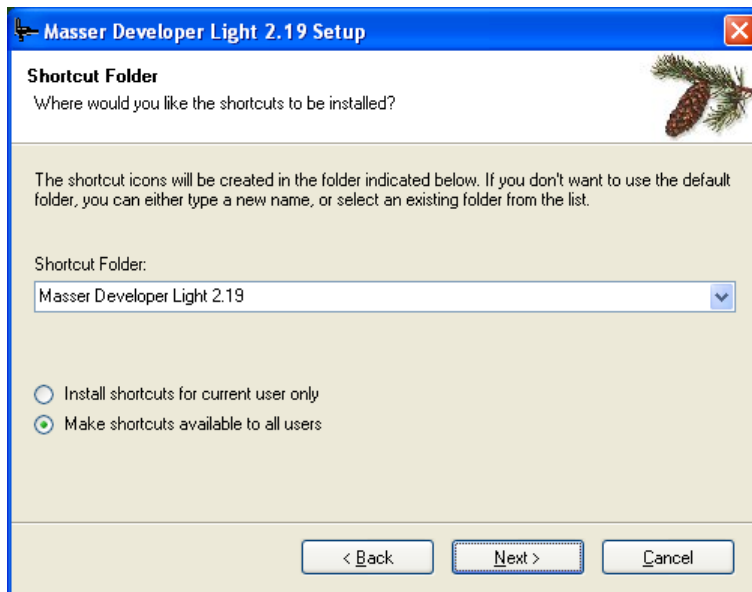
Insert the Masser Developer installation CD and the installation starts automatically. If the installation doesn't start automatically then start Setup.exe from CD. Do not connect USB-Serial cable when installing software.



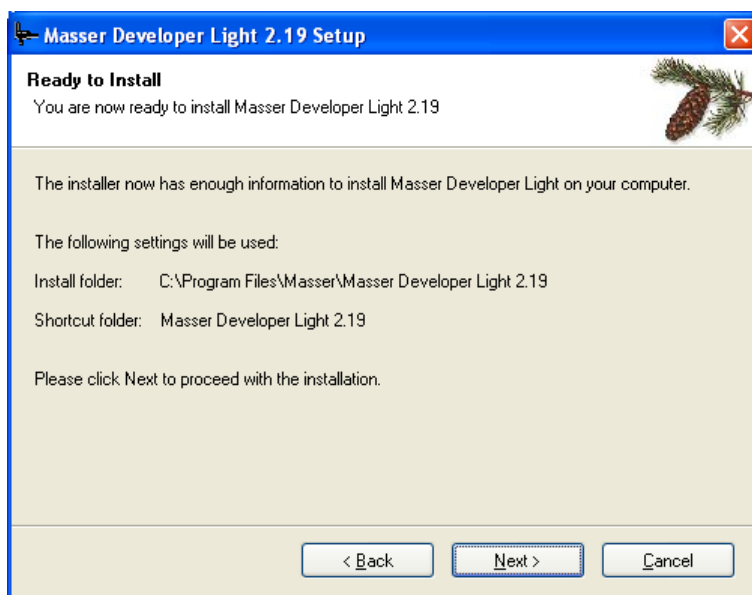
Press "Next" to continue.



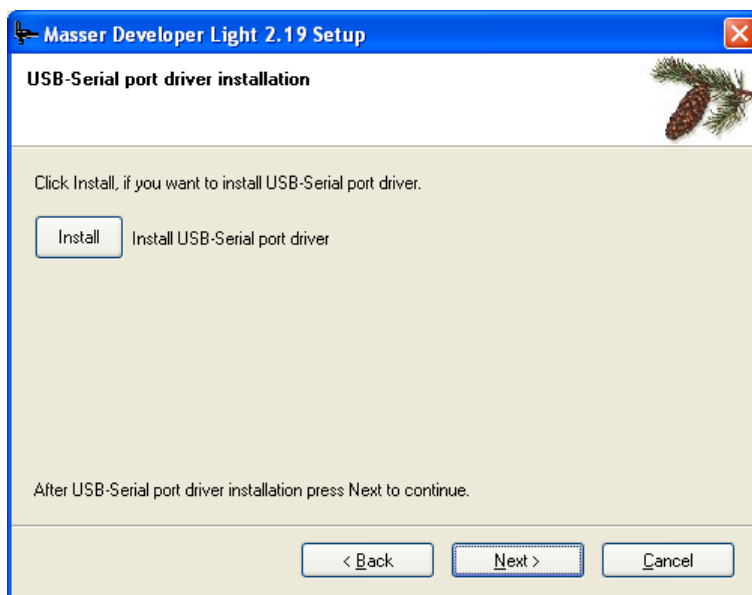
Accept proposed folder for installation and press "Next" to continue.



Shortcut Folder. Press "Next" to continue.

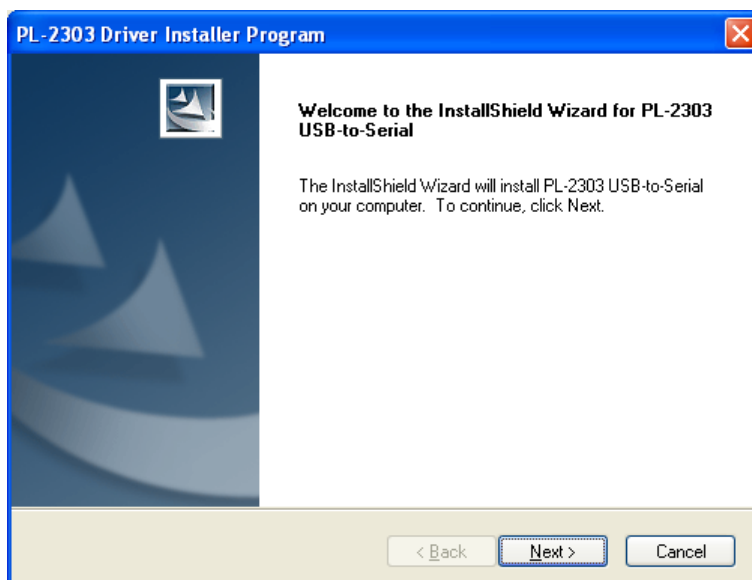


Press "Next" to continue.

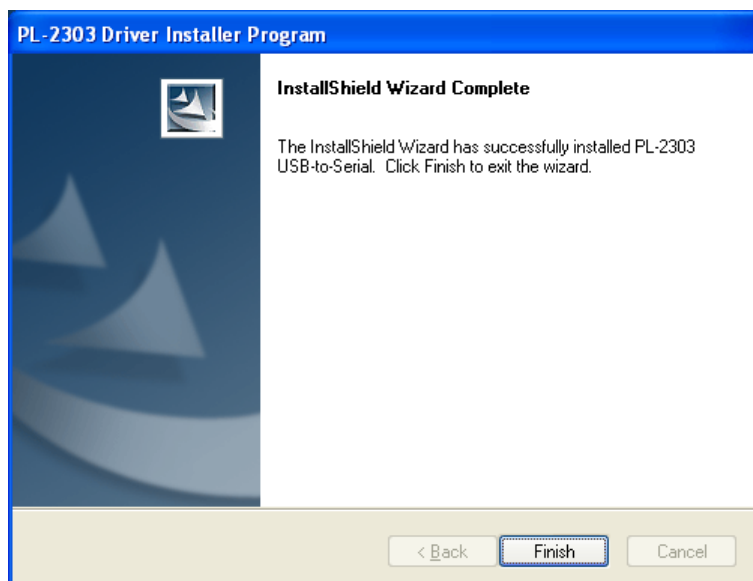


If USB to Serial port adapter is used, the USB drivers must be also installed. USB driver installation can be started from the following installation window by pressing **Install** button.

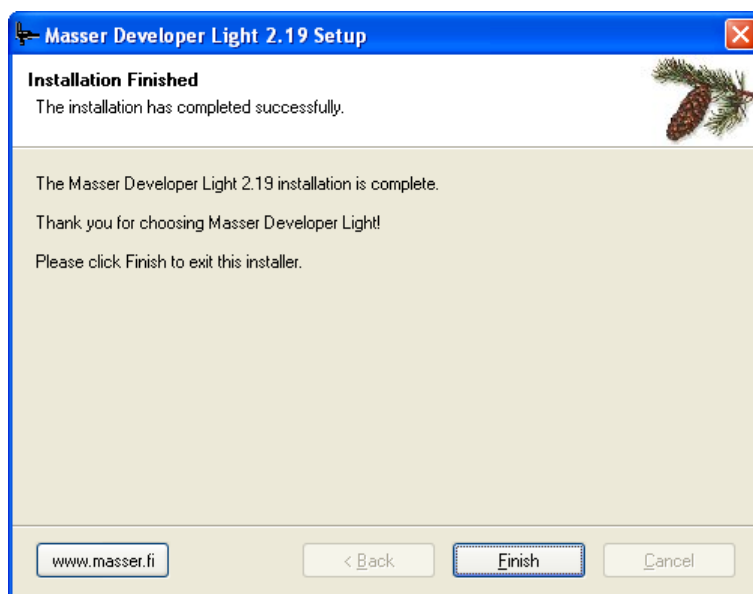
USB-Serial port driver installation.



Press "Next" to continue.



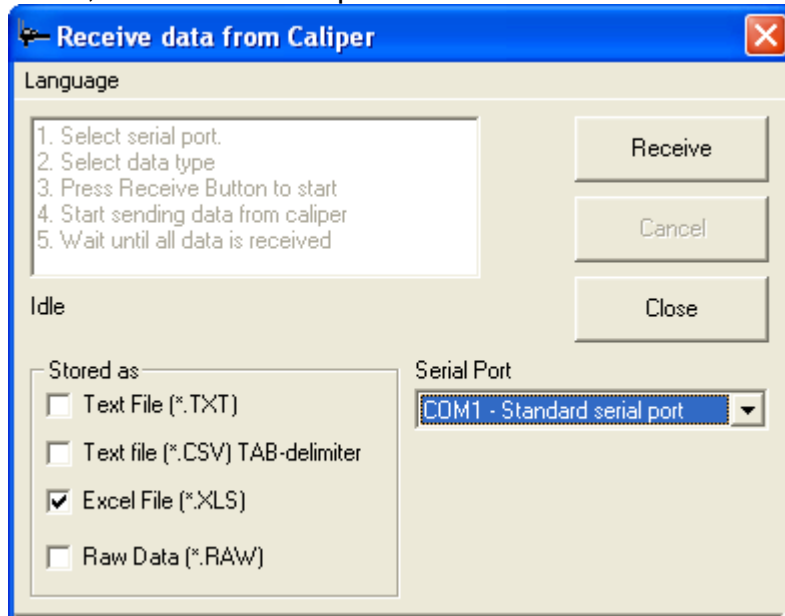
USB - Serial port driver has been installed, press "Finish" to close installer program.



Press "Finish" to close installer program.

RECEIVE DATA FROM CALIPER

Collected data is received from caliper by starting the Masser Developer light program from *Start->Programs->Masser Developer light*. When the program starts, main screen is opened.



Before transfer, user may select data format for received data. The data types are:

- Text File (.TXT)
- Text File (.TXT) Tab delimited
- Excel File (.XLS)
- Raw data (.RAW), used when tailored reporting is used in the PC program.

NOTE! Excel version 2007 or newer uses an appendix .XLSX

Receiving data from the caliper:

1. Select serial port
2. Select data type for received data. Several data types are possible.
3. Connect a cable between the PC and the caliper or establish Bluetooth connection if Bluetooth is used.
4. Press Receive button to set the PC ready to receive the data from caliper.
5. Start sending data from caliper.
6. Wait until data is received.
7. Save the received data.

When the transfer is completed, filename for the data is asked and all selected file types are saved.

Example of .txt -file.

Results					
BATCH	Latitude	Longitude	Date		
1	6632.3647N	2546.6788E	280406		
LOT	PILE NR	Species			
1	123	Pine			
TREE NR	Dia 1	Dia 2	Lenght	Quality	
1	243	244	45	Grade 1	
2	240	239	46	Grade 1	
3	247	249	46	Grade 1	
4	248	246	43	Grade 2	
5	249	249	45	Grade 1	
6	272	271	45	Grade 1	
7	261	260	45	Grade 1	
8	258	256	45	Grade 1	
9	260	261	47	Grade 1	
10	257	255	47	Grade 3	
11	248	252	48	Grade 1	
12	246	246	48	Grade 1	
LOT	PILE NR	Species			
2	124	Spruce			
TREE NR	Dia 1	Dia 2	Lenght	Quality	
1	282	279	50	Grade 1	
2	280	278	50	Grade 1	
3	283	281	50	Grade 1	
4	272	275	50	Grade 1	
5	260	263	50	Grade 1	

Example of excel .xls-file when opened.

Microsoft Excel - MEAS3 example.XLS												
File Edit View Insert Format Tools Data Window Help Adobe PDF												
100% Arial 10 B I U												
A1 BATCH												
	A	B	C	D	E	F	G	H	I	J	K	L
1	BATCH	Latitude	Longitude	Date	LOT	PILE NR	Species	TREE NR	Dia 1	Dia 2	Lenght	Quality
2	1	6632.3647N	2546.6788E	280406	1	123	Pine	1	243	244	45	Grade 1
3	1	6632.3647N	2546.6788E	280406	1	123	Pine	2	240	239	46	Grade 1
4	1	6632.3647N	2546.6788E	280406	1	123	Pine	3	247	249	46	Grade 1
5	1	6632.3647N	2546.6788E	280406	1	123	Pine	4	248	246	43	Grade 2
6	1	6632.3647N	2546.6788E	280406	1	123	Pine	5	249	249	45	Grade 1
7	1	6632.3647N	2546.6788E	280406	1	123	Pine	6	272	271	45	Grade 1
8	1	6632.3647N	2546.6788E	280406	1	123	Pine	7	261	260	45	Grade 1
9	1	6632.3647N	2546.6788E	280406	1	123	Pine	8	258	256	45	Grade 1
10	1	6632.3647N	2546.6788E	280406	1	123	Pine	9	260	261	47	Grade 1
11	1	6632.3647N	2546.6788E	280406	1	123	Pine	10	257	255	47	Grade 3
12	1	6632.3647N	2546.6788E	280406	1	123	Pine	11	248	252	48	Grade 1
13	1	6632.3647N	2546.6788E	280406	1	123	Pine	12	246	246	48	Grade 1
14	1	6632.3647N	2546.6788E	280406	2	124	Spruce	1	282	279	50	Grade 1
15	1	6632.3647N	2546.6788E	280406	2	124	Spruce	2	280	278	50	Grade 1
16	1	6632.3647N	2546.6788E	280406	2	124	Spruce	3	283	281	50	Grade 1
17	1	6632.3647N	2546.6788E	280406	2	124	Spruce	4	272	275	50	Grade 1
18	1	6632.3647N	2546.6788E	280406	2	124	Spruce	5	260	263	50	Grade 1
19	1	6632.3647N	2546.6788E	280406	2	124	Spruce	6	258	259	50	Grade 1
20	1	6632.3647N	2546.6788E	280406	2	124	Spruce	7	249	250	50	Grade 1
21	1	6632.3647N	2546.6788E	280406	3	125	Spruce	1	251	249	45	Grade 1
22	1	6632.3647N	2546.6788E	280406	3	125	Spruce	2	246	246	45	Grade 1
23	1	6632.3647N	2546.6788E	280406	3	125	Spruce	3	242	246	45	Grade 1
24	1	6632.3647N	2546.6788E	280406	3	125	Spruce	4	240	241	45	Grade 1
25	1	6632.3647N	2546.6788E	280406	3	125	Spruce	5	239	241	45	Grade 1
26	1	6632.3647N	2546.6788E	280406	3	125	Spruce	6	241	241	45	Grade 1
27	1	6632.3647N	2546.6788E	280406	3	125	Spruce	7	237	236	45	Grade 1



CONTACT INFORMATION

MASSER OY

Jämytie 1
FIN-96910 ROVANIEMI
FINLAND

Tel + 358 400 904 500
Fax + 358 16 282 554

e-mail: masser@masser.fi

www.masser.fi

