

Masser Loader V3.0.0

user manual
18.05.2020

1. MASSER LOADER

Caliper software installation and parameters file transfer between caliper and PC is performed by using Masser Loader -PC software. Measuring data and reports can also be transferred from caliper and received to computer with Masser Loader.

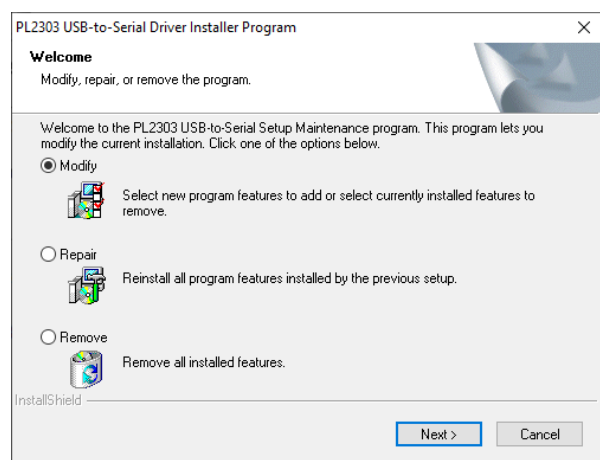
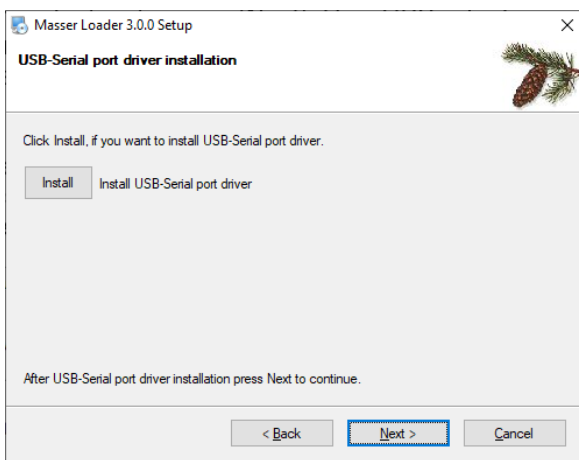
Latest version of software can be found from address: <http://www.masser.fi/support/>

1.1 Masser Loader PC-software installation

Start the installing program of Masser Loader – software. **Do not connect** USB-Serial port adapter and cable to caliper or to PC during Masser Loader installation. Follow installing program’s guide and accept the definitions of install program.

USB-adapter and serial cable driver are installed during Masser Loader program install. Once program asks to install driver for caliper connection, select and press “Install”. Updated USB-adapter driver is installed automatically.

Installing program will open following display if used computer has previous USB-driver settings and installations. It is possible to select settings for new driver install. Choose and accept previous driver’s **Modify** on driver install.

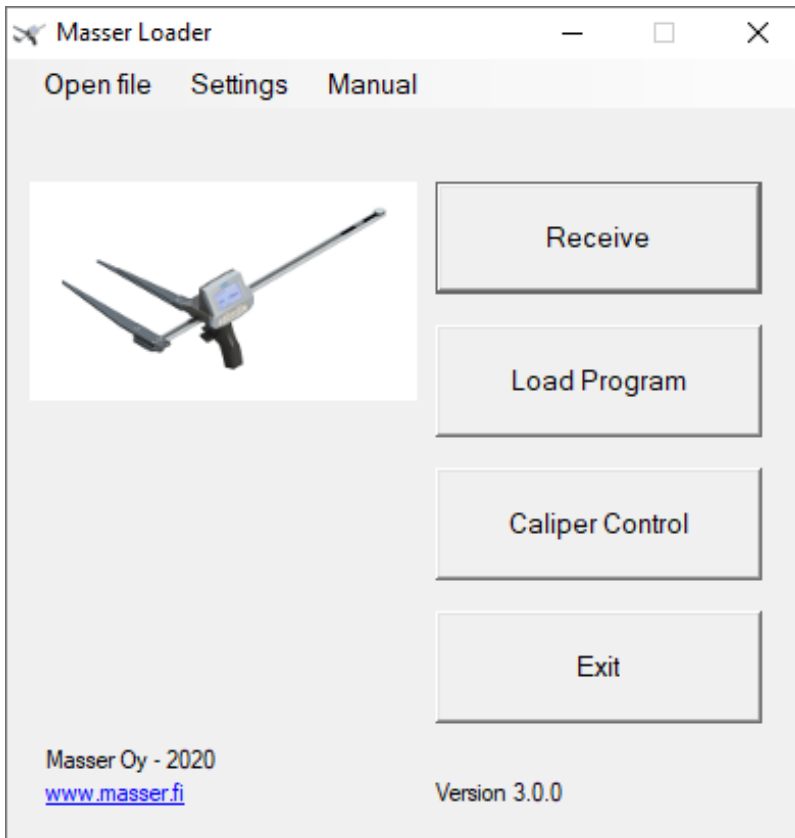


Driver installing could require to restart computer. Save files and close other opened programs before computer is restarted!

1.2 Software main menu and functions

Connect caliper to PC with serial cable before starting Masser Loader software. USB-adapter and cable serial port (COM) number are identified and chosen automatically. Serial port is named “*COMX Masser Caliper*”.

Start Masser Loader software from exemplar desktop icon.



Software functions:

Receive	Receive measuring data from caliper to PC
Load Program	Load program to caliper
Caliper Control	Parameters file transfer to caliper (optional function)
Exit	Close program

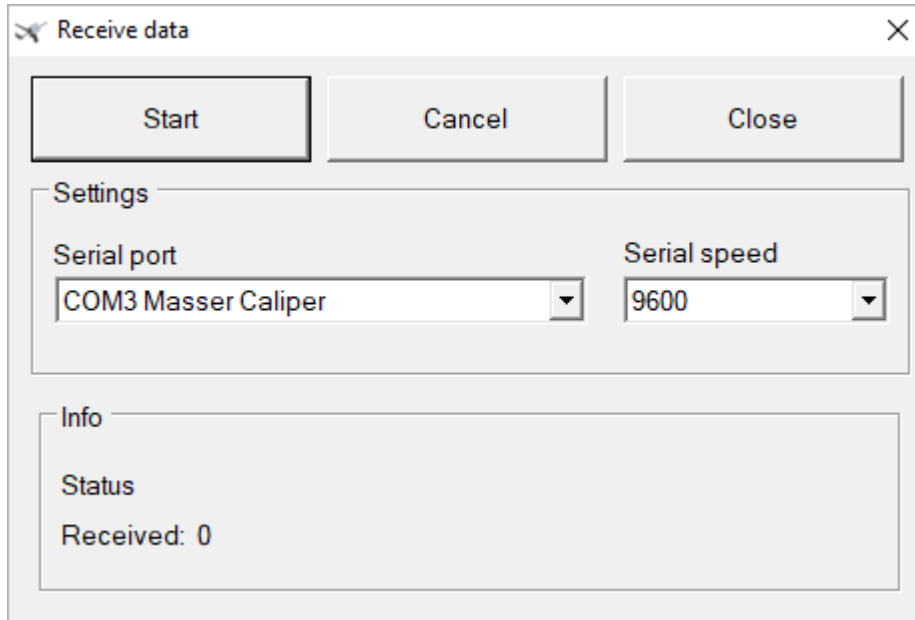
Open file	Open previously transferred and saved file from PC
------------------	--

Settings	Program settings: Terminal window codepage, Excel field delimiter mark and language settings
-----------------	--

Manual	Program user manual
---------------	---------------------

1.3 Receive caliper results and reports to PC

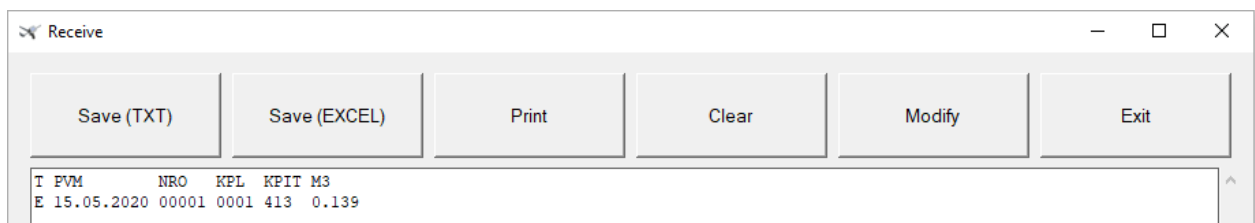
Select **Receive** from main menu. Program will open separate Receive data -window:



- Start** Open and start data transfer receive display
- Cancel** Abort data transfer
- Close** Close Receive data -window and return to main menu

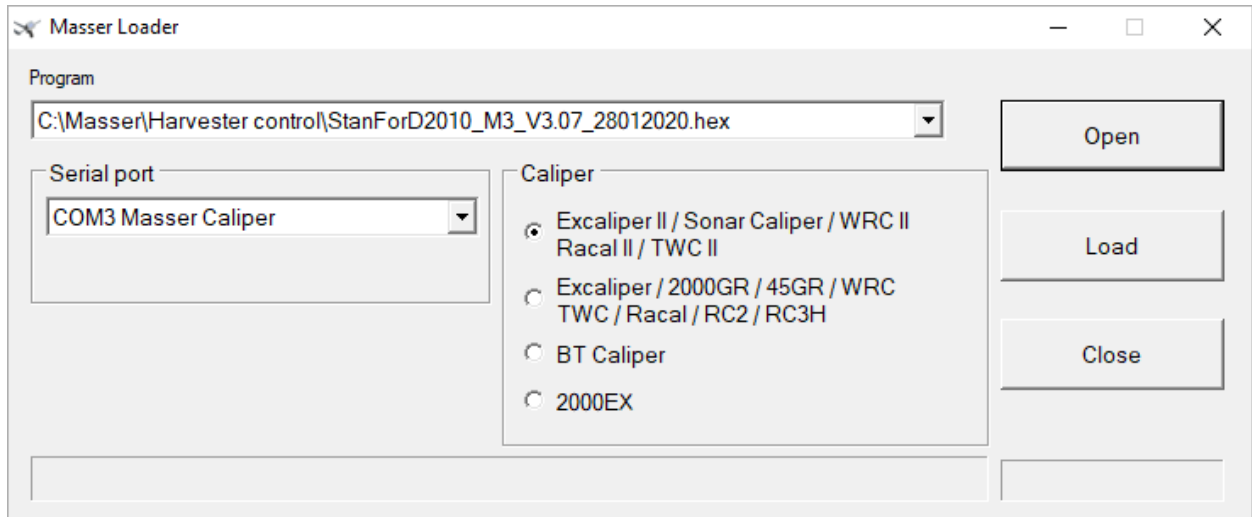
Check used serial port number (if several serial ports are used with calipers) and used data transfer speed. Serial speed must be same as selection in caliper settings.

After start next data transfer Receive window will open. From Receive-window it is possible to save transferred or opened file to text format (.txt), Excel-format (EXCEL) and print current display. Receive window data can also be cleared and set to be modified (modifying on-off). Close Receive-window by pressing Exit (program returns to previous Receive data -window).



1.4 Loading a software to caliper

Select **Load Program** from main menu. Program will open separate loading window:

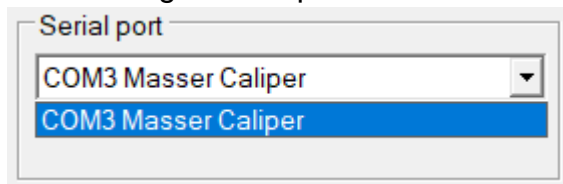


Open	Browse and open software to be loaded to caliper
Load	Load chosen software to caliper
Close	Close loading window and return to main menu

Loading a program:

1. Select loaded software (.HEX-file) with “Open” or choose software from Program drop-down menu (menu will save previously loaded software file paths to menu).

2. Select right serial port for data transfer.



3. Select right caliper model from options (Excaliper II).

4. Set caliper ready for software loading.

a) Shut off caliper.

b) Press **Toggle switch (1)** upwards and hold it up during caliper start. Once toggle switch is pressed up, press **[ENTER]-button (2)**.

c) **Toggle switch** and **[ENTER]-button** can be released once caliper screen will show specific identification display from caliper program version.



5. Caliper display allows four different functions:

RUN PROGRAM	Start caliper software (if already previously installed)
INSTALL	Load new software to caliper
MEMORY TEST	Check and verify caliper memory
SHUTDOWN	Shut off caliper

Select **INSTALL** with toggle switch and accept by pressing **[ENTER]**. Caliper is now ready for software install.

6. Start software loading from Masser Loader. Press "Load".

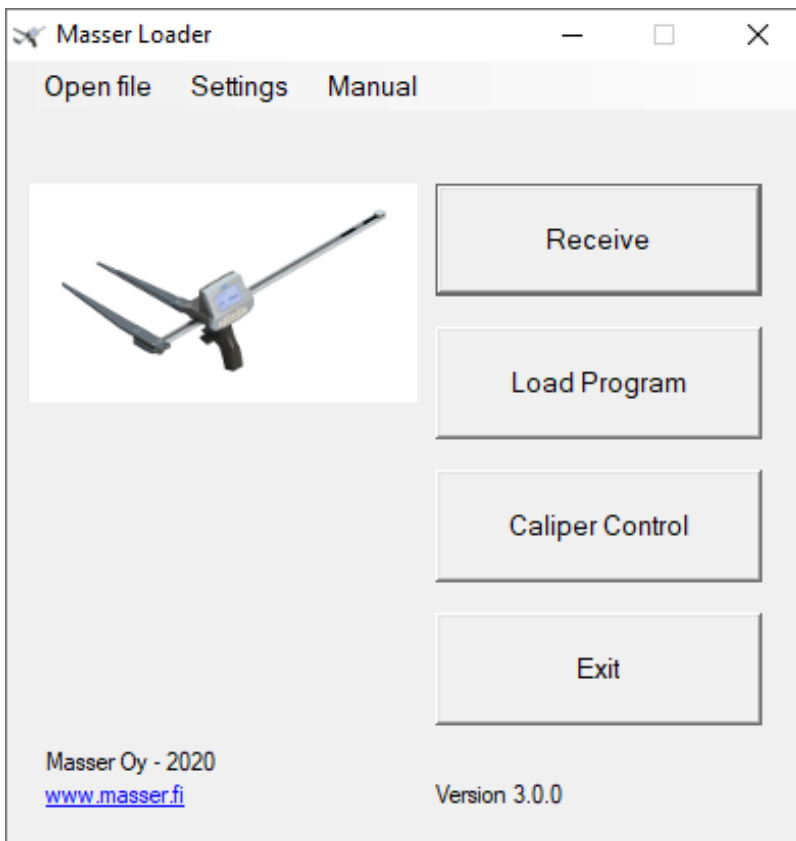
Software user license is checked after software is loaded to caliper. Once caliper license information is ensured, Masser Loader will show notification "Loading is ready!".

7. Start caliper program by pressing **[ENTER]**-button on the caliper handle.

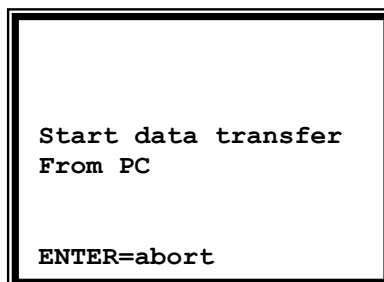
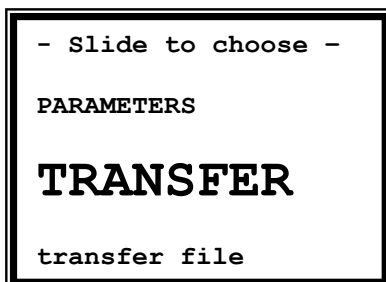
1.5 Parameters file transfer to caliper

In some caliper software parameters file can be transferred to caliper after the software has been loaded. Parameters file is transferred separately e. g. for different measuring forms or with different identification data. For example, parameters file for wood sortiments, quality grades and log rejection faults are transferred in log gauge control measuring.

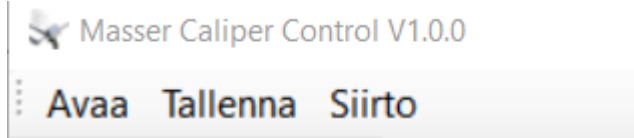
1. Select **Caliper Control** from Masser Loader -program main menu.



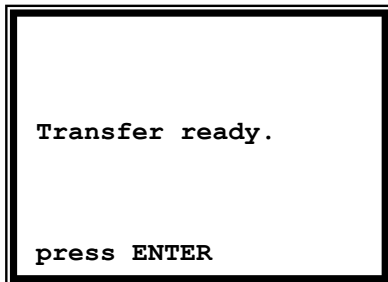
2. Press "Caliper Control"-button and Masser Caliper Control -subprogram will start.
3. Set caliper ready to receive parameters and transfer files.



4. Check that USB-adaptor and serial cable is connected.
5. Press "Siirto"-button (Transfer) on Caliper Control program. Program will transfer current display which is opened and edited in Caliper Control.



6. Once transfer is ready, caliper display will show next display.



More accurate guide of Masser Caliper Control -program interface will be found from separate individual manual.

CONTACT INFORMATION

MASSER OY

Norvatie 4
FIN-96910 ROVANIEMI
FINLAND

Tel + 358 400 904 500
email: masser@masser.fi

www.masser.fi

