



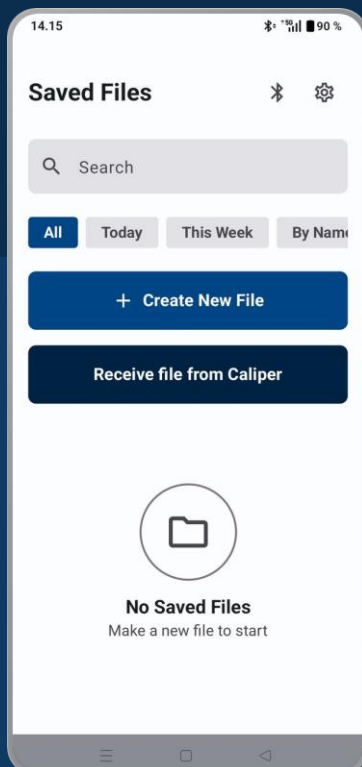
# MOBILE CALIPER 2

## User Guide

---

**Part 1** Excaliper II · Racal II BT · TWC II BT

**Part 2** BT Caliper MEM / PRO



*Collecting and transferring tree-measurement data over Bluetooth.*

# Two ways to collect data

Both caliper families use the Mobile Caliper app and the same two workflows. Choose your method, then jump to the matching section.



## METHOD 1

### Tree by tree

**Real time.** The app receives each tree as you measure it. Connect first, create a file, then start measuring.



## METHOD 2

### File from caliper

**All at once.** Measure every tree first, then send the whole file to the app in one transfer.



## Bluetooth essentials

**Point-to-point** Only one connection can be active at a time.

**Caliper is Slave** Always connect from the mobile app, not the caliper.

**Always powered** The BT module is on whenever the caliper is ON.



## PART 1

# Excaliper II family

Excaliper II · Racal II BT · TWC II BT

Caliper setting: **SETTINGS → TREE DATA → RECORD / NOT IN USE**

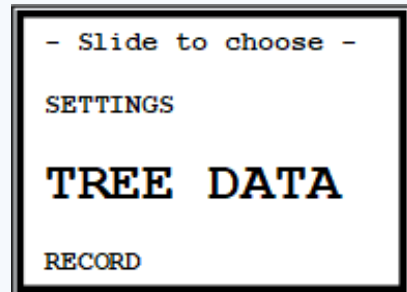


# Getting started

**Power on** by pressing **ENTER**. Open **SETTINGS** → **TREE DATA** and choose how the caliper stores tree data for your chosen method.

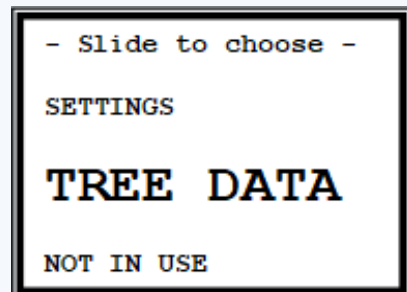
## TREE DATA - RECORD

Send tree data tree by tree from caliper METHOD 1.



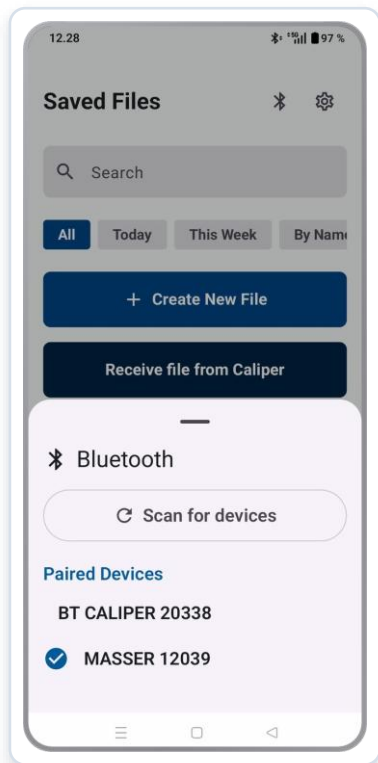
## TREE DATA - NOT IN USE

Send the file from caliper, METHOD 2.

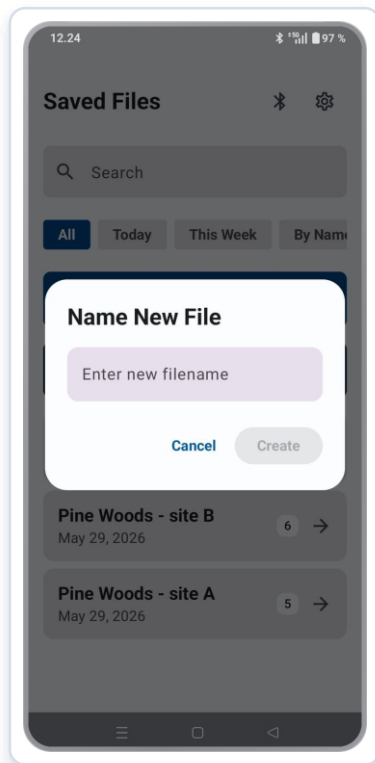


# Measuring tree by tree

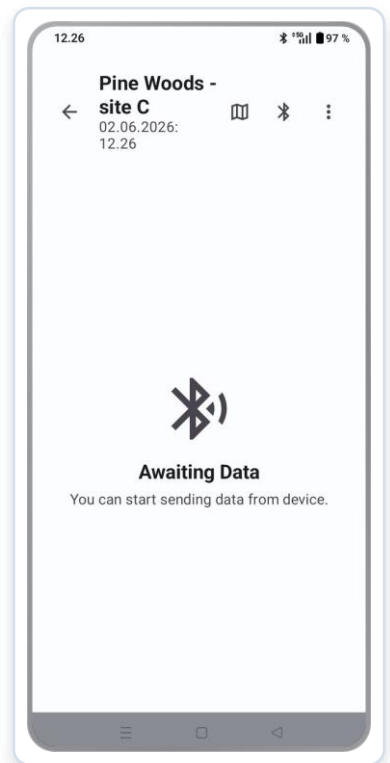
- 1 Connect**  
In the app, tap the BT button and pick your caliper from the list.
- 2 Create a file**  
Choose “Create New File” in the app and give it a name.
- 3 Start measuring**  
The app waits for data — start MEASURE on the caliper.
- 4 Trees stream live**  
Each measured tree appears in the app in real time.



Pick caliper



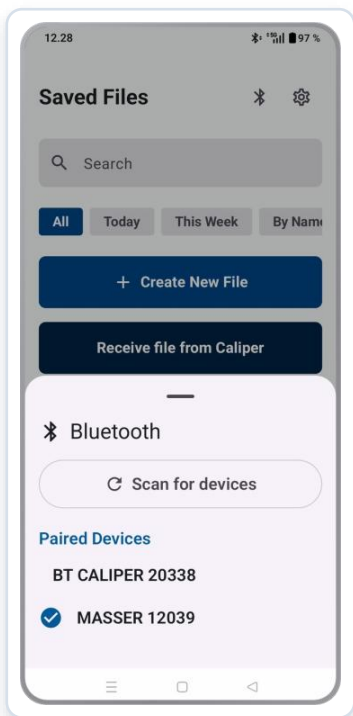
Name file



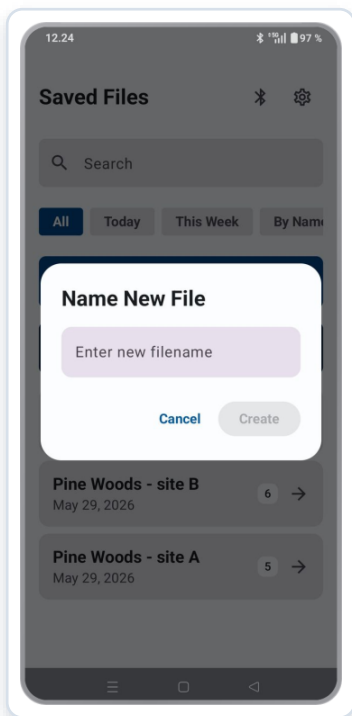
Receiving

# Sending the file from the caliper

- 1 Measure all trees first**  
In Caliper set TREE DATA → NOT IN USE, then measure your trees.
- 2 Connect from the app**  
Tap the BT button and select your caliper.
- 3 Open TRANSMIT**  
On the caliper main menu choose TRANSMIT and the data block.
- 4 Receive in the app**  
Select “Receive file from Caliper” and name the file.
- 5 Send over Bluetooth**  
Pick Bluetooth — the file sends, then the caliper returns to the menu.



Pick caliper



Name file



Measured data



## PART 2

# BT Caliper MEM / PRO

Integrated Bluetooth · Slave mode

Caliper setting: **SETTINGS** → **TREE DATA OUT** mode

# The main menu at a glance

## MAIN MENU



### SHUTDOWN

Power off the caliper



### MEASURE

Measure / display settings



### BROWSE

Browse saved measurements



### DATA TRANSFER

Transfer measurement data



### SETTINGS

Caliper settings

## SETTINGS SUBMENU



### MEASURE SETTINGS

Measure display settings



### SINGLE / CROSS

Single or cross measurement



### TREE DATA OUT

Tree-data output mode



### ERASE MEMORY

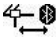
Erase memory (YES / NO)

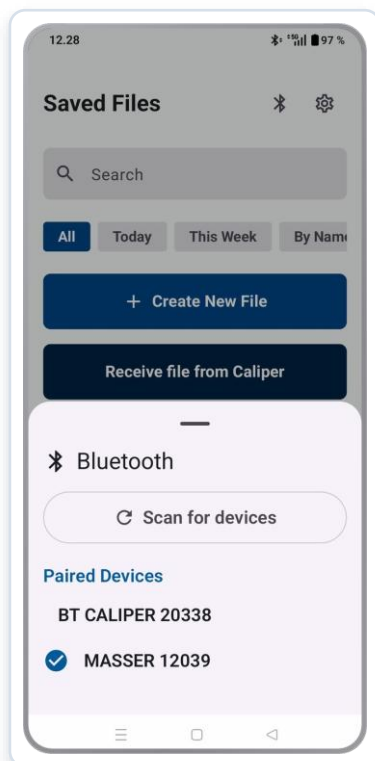


### RETURN

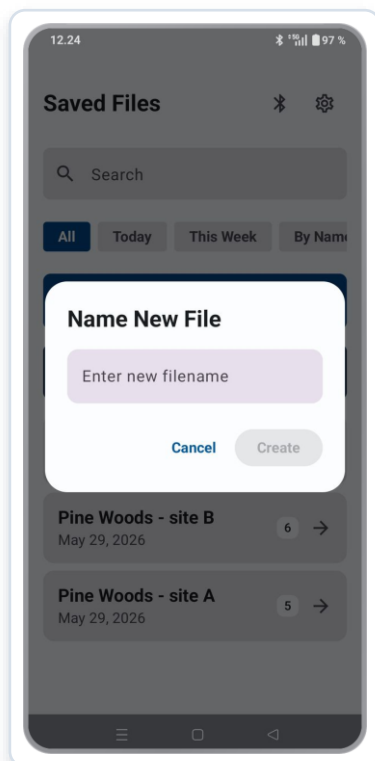
Back to the main menu

# Measuring tree by tree

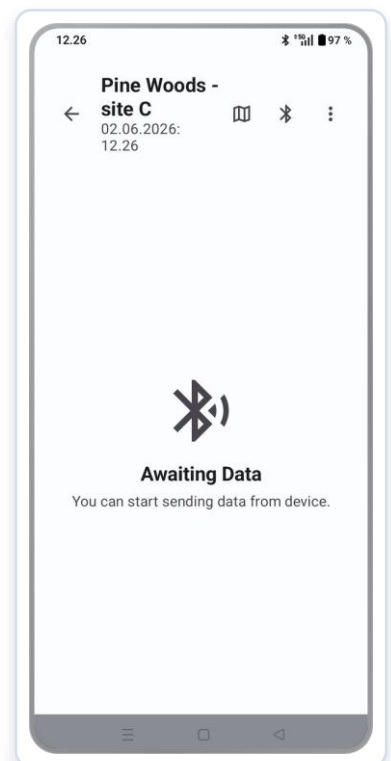
- 1 Connect**  
Tap the BT button in the app and select your caliper.
- 2 Set output mode**  
On the caliper choose SETTINGS → TREE DATA OUT 
- 3 Create a file**  
Tap “Create New File” in the app and name it.
- 4 Measure**  
Start MEASURE — trees stream to the app live.



Pick caliper

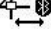


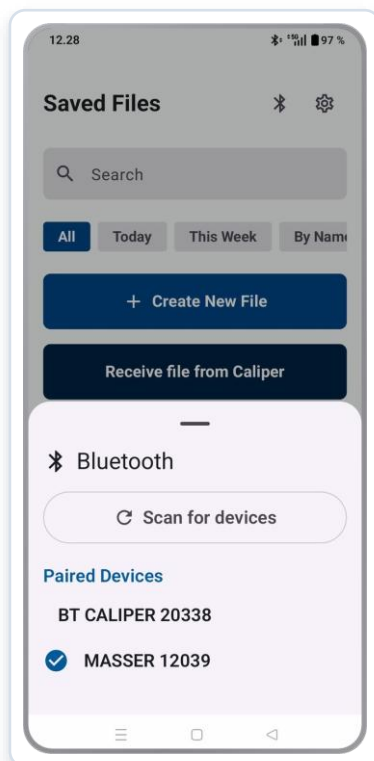
Name file



Receiving

# Sending the file from the caliper

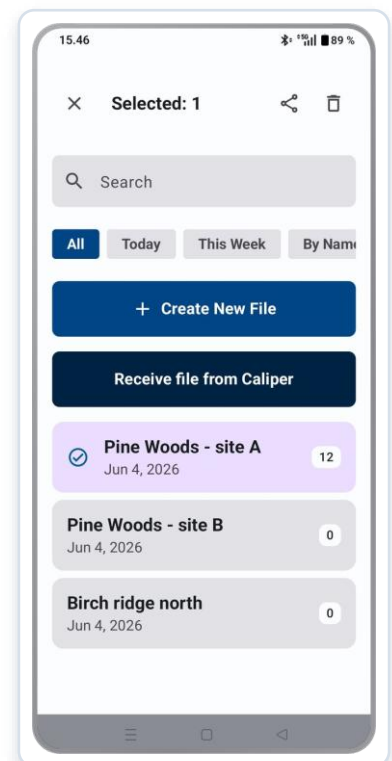
- 1 Measure first**  
Set TREE DATA OUT  and measure all trees into caliper's memory.
- 2 Connect**  
When finished, connect from the app via the BT button.
- 3 Open DATA TRANSFER**  
On the caliper main menu, go to DATA TRANSFER.
- 4 Receive & name**  
Choose "Receive file from Caliper", name it — data transfers.



Pick caliper



Measured data



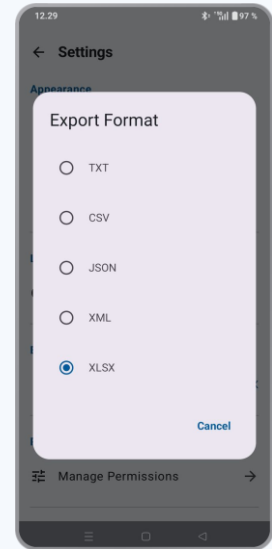
File saved

# Sharing files from the app

Once your measurements are in the app, export them in the format you need.

## 1 Choose export format

Open Settings (gear icon, top-right) and select the file format you want for sharing your measurement data.



## 2 Share the file

Select the file from the list and tap the Share button in the top-right corner to export it.

