

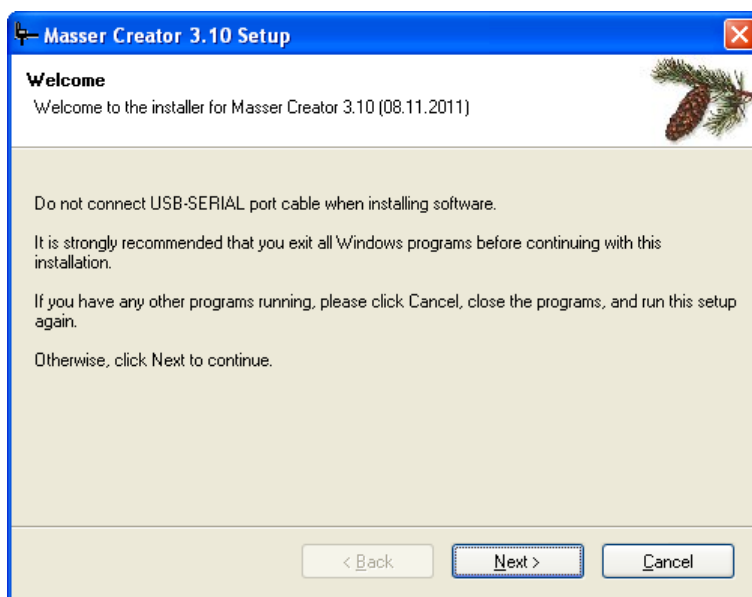


## **Masser Creator Loader V3.5.0**

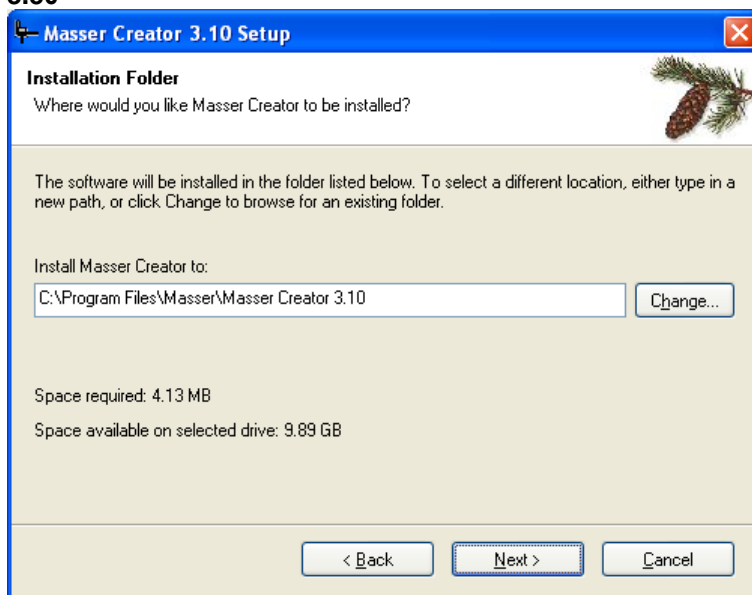
### **User manual**

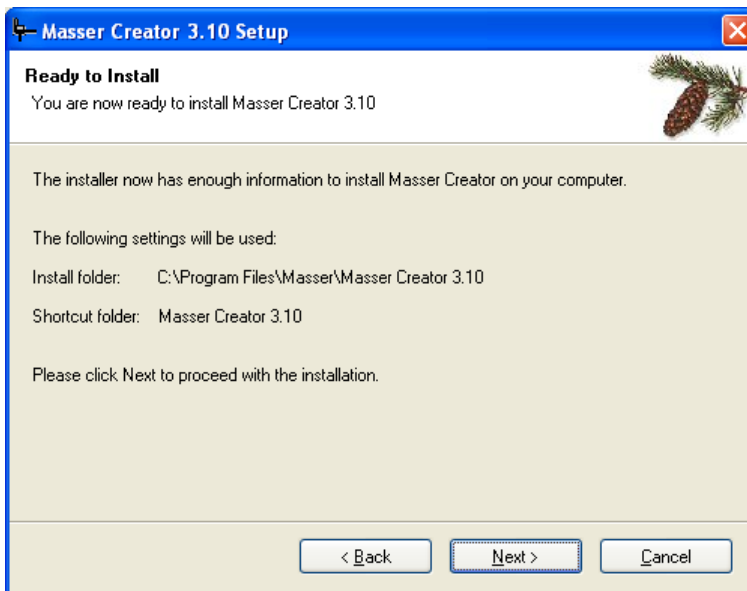
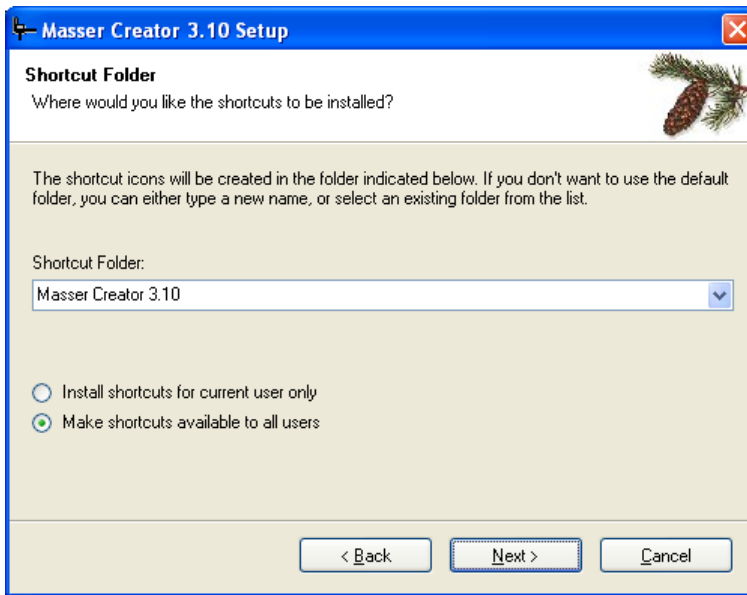
## SOFTWARE INSTALLATION

Start installation by starting MasserCreatorLoaderV350Setup.exe – from the CD.  
Follow the installation procedure by selecting: **Next** until the procedure ends.  
Do not connect USB-Serial cable when installing software.

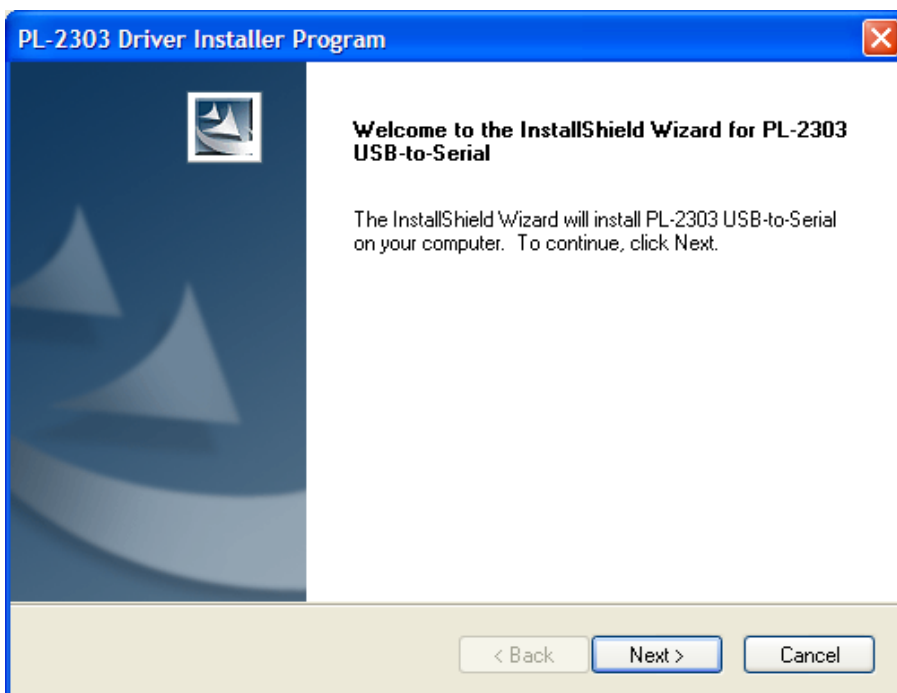
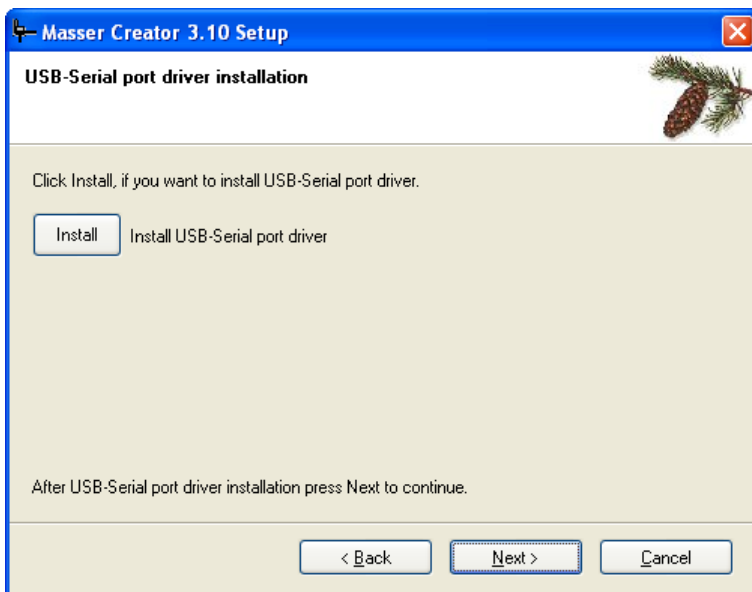


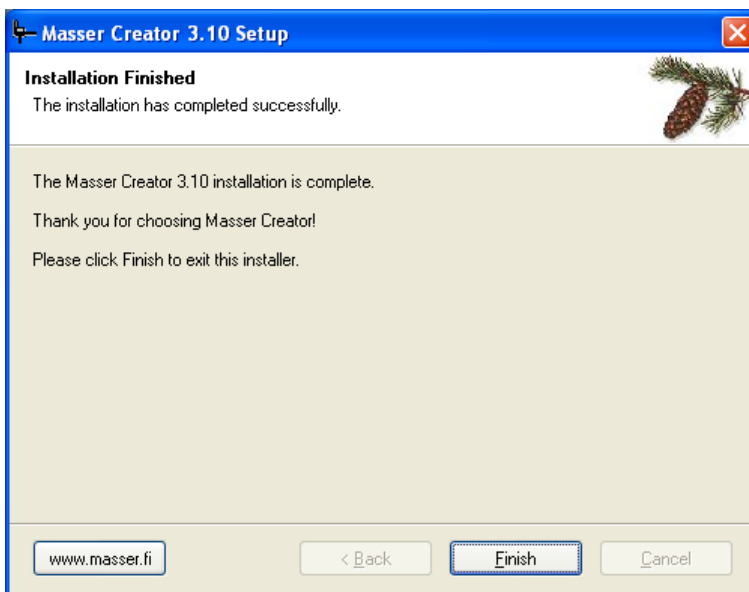
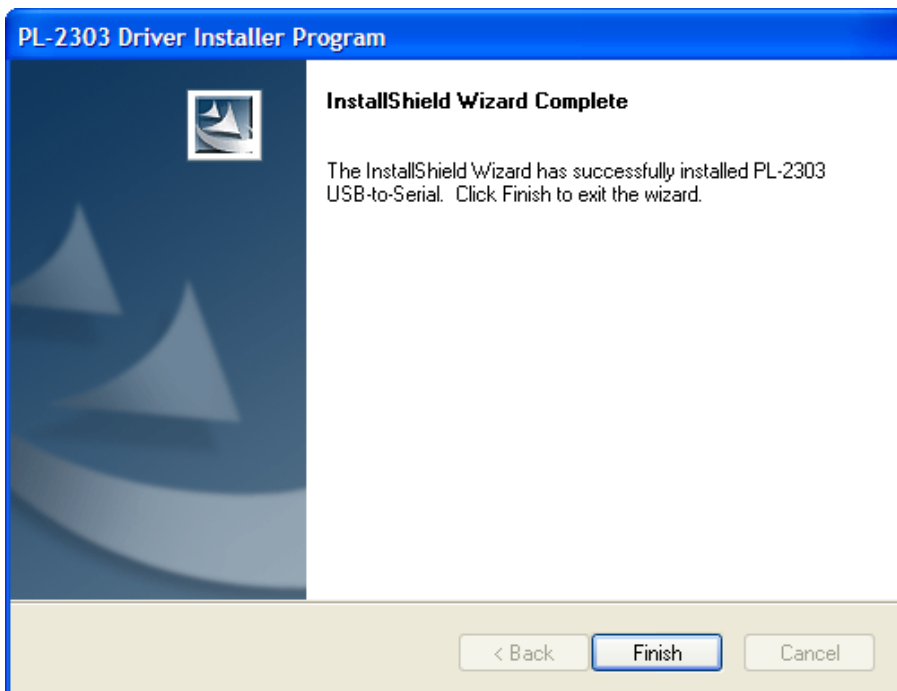
Accept proposed folder for installation “C:\Program Files\Masser\Masser Creator Loader 3.50”





If USB to Serial port adapter is used, the USB drivers must be also installed. USB driver installation can be started from the following installation window by pressing **Install** button.





## STARTING THE PROGRAM

Select **Masser Creator** from **Programs-** menu in PC.

If USB to Serial port adapter is used then connect cable to USB-port before selecting "Receive" or "Load".



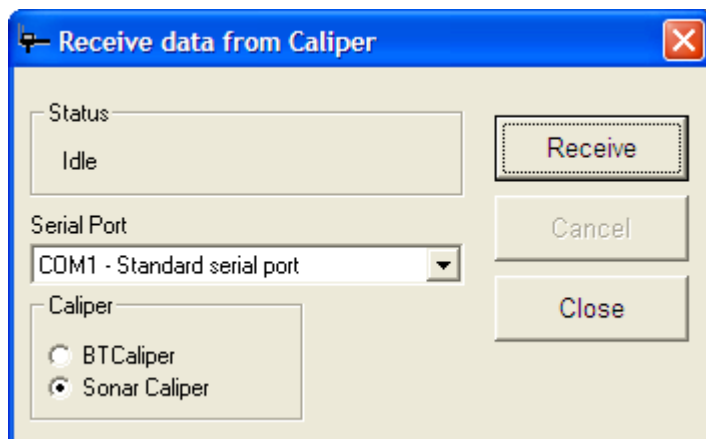
Functions:

**Receive**  
**Load program**  
**Open file**  
**Exit**

Receive the measurement data from the caliper into the PC  
Load program or driver to the caliper  
Open previously transferred file  
Exit the software

## RECEIVE DATA FROM THE CALIPER TO THE PC

Select **Receive** from the main window:



<b>Status</b>	transfer status and the number of received characters
<b>Receive</b>	start receiving
<b>Cancel</b>	stop data transfer
<b>Close</b>	return to the main window
<b>Serial port</b>	select serial port
<b>Caliper</b>	caliper type

**When USB –Serial adapter is used PC- program identifies automatically usable serial port.**

Status - frame shows the status of the transfer process. When PC receives data status will be "Receiving" and Received-field shows the number of received characters.

If the PC does not receive any data after the start or status shows "Idle", then the connection between PC and caliper is not ok. Check the cable or Bluetooth connection.

Receiving data from the caliper:

1. Set serial port and caliper type.
2. Start receiving by selecting **Receive** from the PC.
3. Start sending from the caliper.
4. Status is changed to "Receiving"
5. When transfer is ready then new window will open.

## Receive - window

	A	B	C	D	E	F	G	H	I	J
1	NUMBER	RADIUS	TYPE	SPECIES	DIAMETER	DISTANCE	AZIMUTH	HEIGHT	LIVE_CROWN	STUMP
2	1000	7m	SAMPLE	Pine	251	635	76			
3	1000	7m	SAMPLE	Pine	193	541	147			
4	1000	7m	SAMPLE	Pine	236	522	180			
5	1000	7m	SAMPLE	Pine	164	538	202	1580	1200	12
6	1000	7m	SAMPLE	Pine	146	347	233			
7	1000	7m	SAMPLE	Pine	153	351	274			
8	1000	7m	SAMPLE	Spruce	261	336	302			
9	1000	7m	SAMPLE	Spruce	181	324	339			
10	1000	7m	SAMPLE	Spruce	274	408	354			
11	1001	7m	SAMPLE	Spruce	168	413	31			
12	1001	7m	SAMPLE	Spruce	278	272	63			
13	1001	7m	SAMPLE	Pine	231	276	96			
14	1001	7m	SAMPLE	Pine	349	375	124			
15	1001	7m	SAMPLE	Pine	148	168	162	1472	1153	14
16	1001	7m	SAMPLE	Pine	324	355	187			
17	1001	7m	SAMPLE	Spruce	248	541	229			
18	1001	7m	SAMPLE	Spruce	273	474	260			
19	1001	7m	SAMPLE	Pine	204	409	303			
20	1001	7m	SAMPLE	Pine	135	253	344			

### Functions:

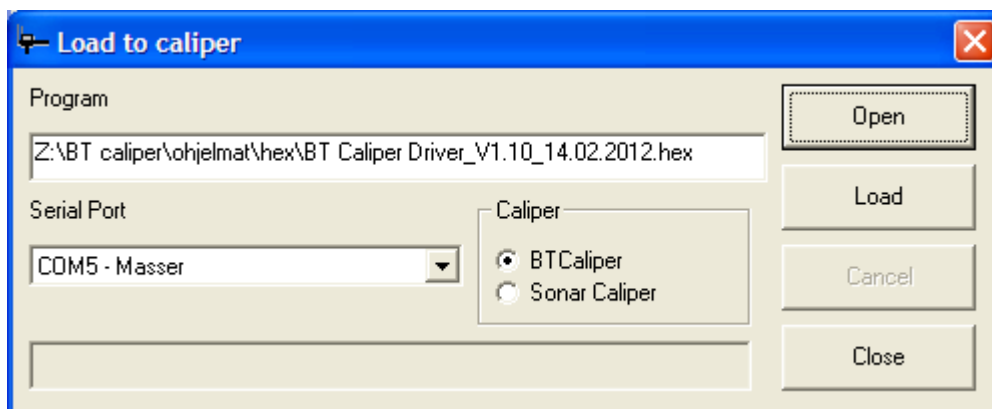
- Save TXT**      Save the received data to txt-file
- Save Excel**      Save the received data in excel-format
- Save ddf**      Save the received data as raw data format (data can be opened later from "Open file")
- Print**      Print data
- Close**      Return to main screen.

Same "Receive" window opens when "Open File" is selected from main menu.



## LOADING A NEW PROGRAM OR DRIVER TO CALIPER

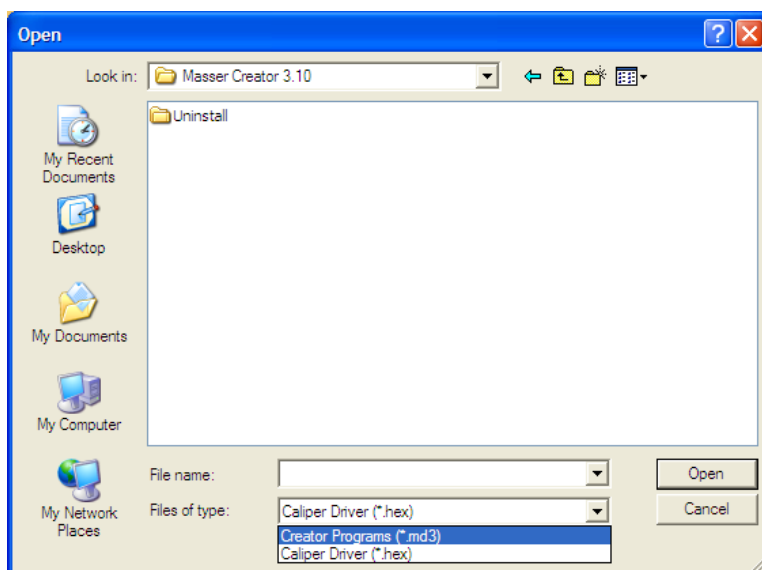
A new Creator program (\*.md3) or Caliper Driver (\*.hex) can be loaded into the caliper by selecting **Load** from the main window. Connect cable or establish Bluetooth connection between PC and Caliper before opening "Load to caliper"-window.



<b>Open</b>	Browse the program/driver which you want to load
<b>Serial port</b>	Selected serial port.
<b>Load</b>	Starts the program loading.
<b>Close</b>	Returns to the main menu.
<b>Caliper</b>	Caliper type

Loading a program or driver to the caliper:

1. Check the caliper type
2. Check that serial port is correct.
3. Choose program or driver by selecting "Open"




4. Set the caliper ready for receiving the program or driver. The caliper driver and program downloading are described in the following pages.
5. When caliper is ready, press "LOAD" to start transfer.

## LOADING THE PROGRAM INTO THE CALIPER (md3-file)

**NOTICE! Loading a new program clears the old program and deletes all measured data!**

### Sonar caliper:

Select  "LOAD PROGRAM" from caliper SETTINGS -menu. Next is asked the type of connection (cable or Bluetooth). Selecting is done by TOGGLE-switch and accepted by pressing [ENTER]. Return to SETTINGS -menu is done by pressing [MENU].

After selection is accepted "WAITING.." is shown on the caliper display.

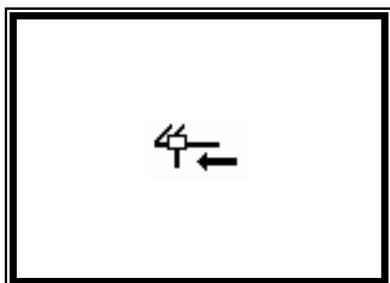
**NOTICE! The caliper must be always in state: WAITING, before you start to send data from PC.**

Now press "Load" from PC-software.

### BT caliper:

Select  **DATA TRANSFER** menu from caliper SETTINGS- menu.

Set the caliper to this mode and the following display appears:



Start transfer from PC by selecting Load from PC.

**[LONG ENTER]** or **[ENTER]** = abort transfer.

## LOADING THE DRIVER INTO THE CALIPER (hex-file)

**NOTICE!** Loading a new driver clears the old program and deletes all measured data!

### Sonar caliper:

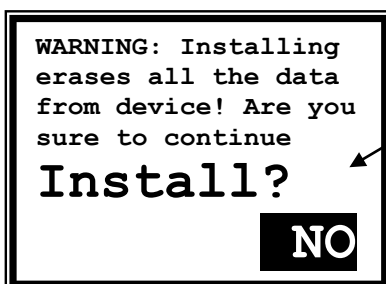
Switch off caliper and set the caliper to loading mode. Display shows:



```
SERVICE :  
Run  
Install  
Shutdown
```

**RUN** = start program in memory of the caliper  
**INSTALL** = clear memory and load new driver  
**SHUTDOWN** = switch off caliper

Select "Install" by TOGGLE-switch and press [ENTER] and the display shows

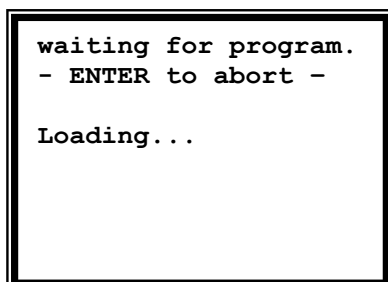


```
WARNING: Installing  
erases all the data  
from device! Are you  
sure to continue  
Install?  
NO
```

#### Attention!!!

Previous program and its all information will be deleted from the memory of the caliper.

Select "YES" by TOGGLE-switch and press [ENTER].



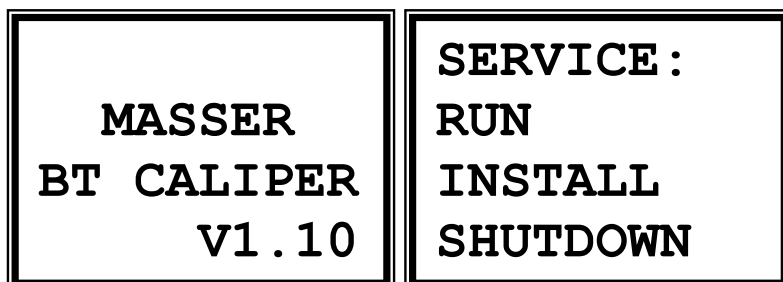
```
waiting for program.  
- ENTER to abort -  
Loading...
```

Now press "Load" from PC-software.

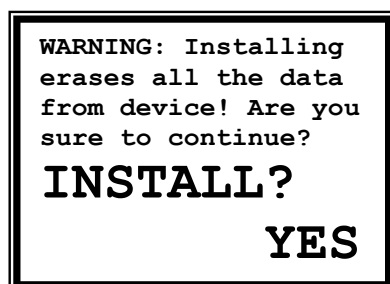
## BT caliper:

Caliper must be shut off. Caliper must be set to loading mode by the following function:

Switch on the caliper by pressing the ENTER-button and keep the ENTER button pressed. When the BIOS version information is shown on the display, open the jaws to maximum immediately (this operation has to done within one second when the caliper software has started). Release the ENTER-button. Select INSTALL with SLIDE from loading menu and press ENTER.



Now the software ask confirmation if the old software will be erased.



Select YES with SLIDE and press ENTER.

Now the caliper is ready to receive new driver from Masser Creator PC software and the Bluetooth module is switched ON.