



## **MASSER Loader V2.00**

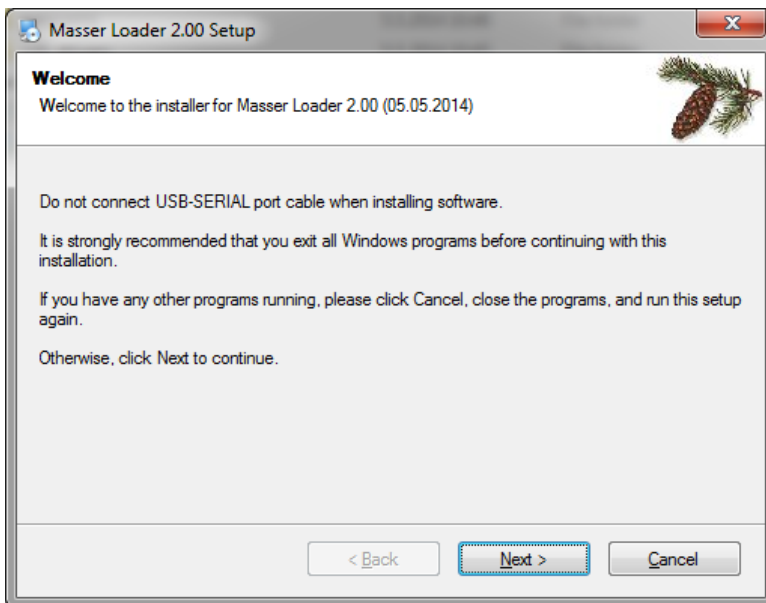
### **user and installation manual**

5.5.2014

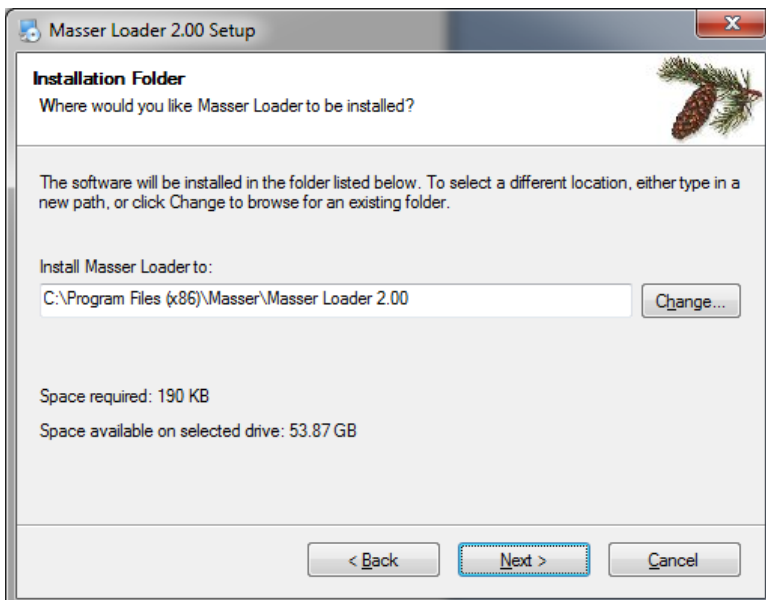
## SOFTWARE INSTALLATION

Latest version of software and drivers can be found from address:  
<http://www.masser.fi/support/>

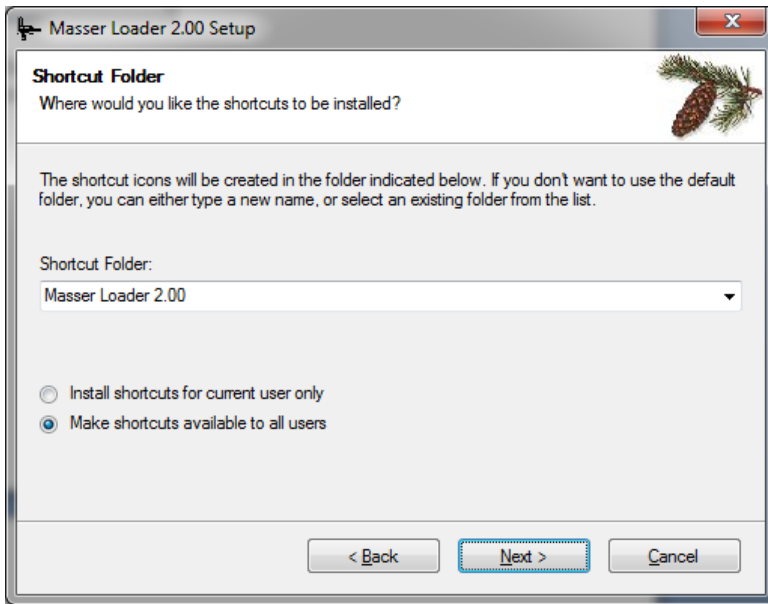
Start installation by starting MasserLoader setup-file. Do not connect USB-Serial cable when installing software.



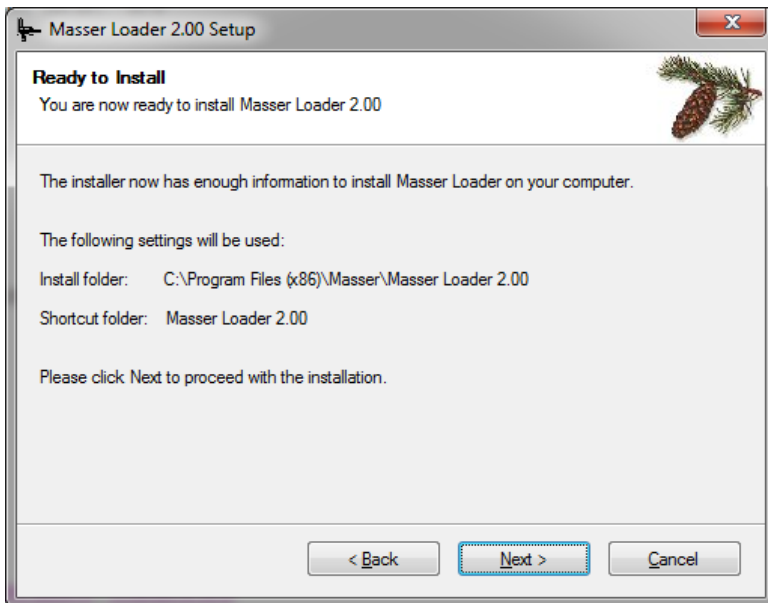
Press "Next" to continue.



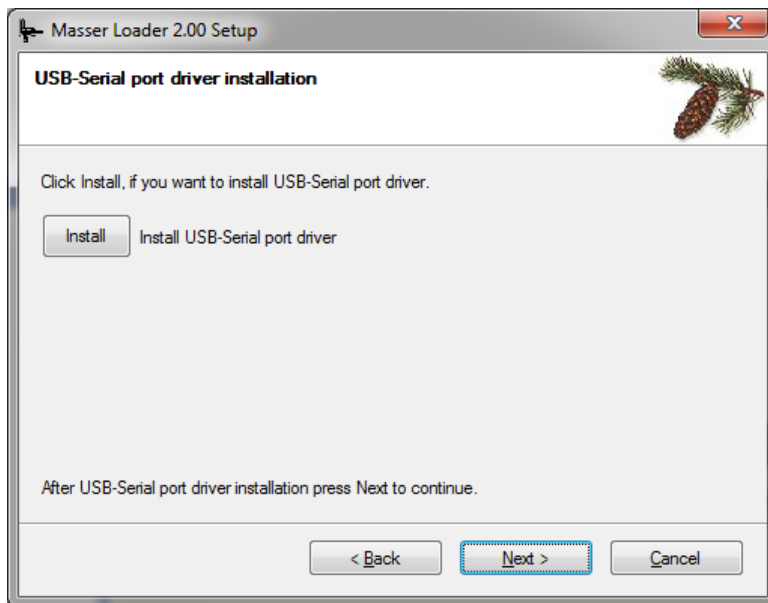
Accept proposed folder for installation and press "Next" to continue.



Shortcut Folder. Press "Next" to continue.

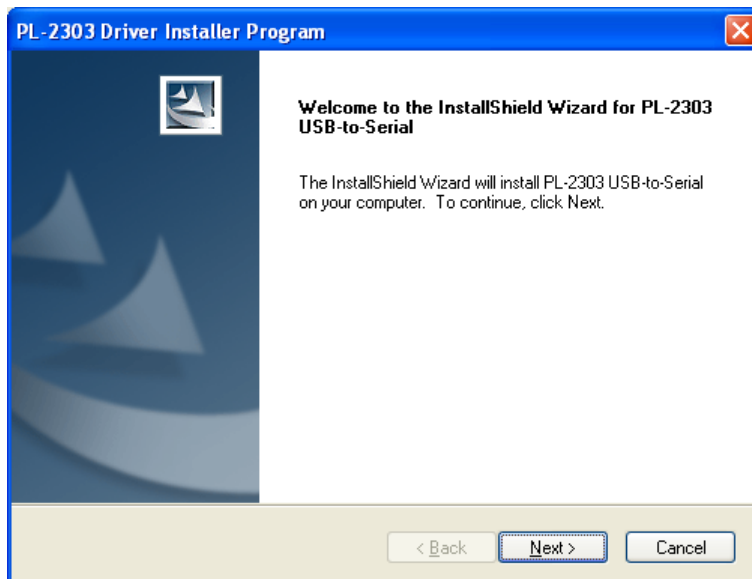


Press "Next" to continue.

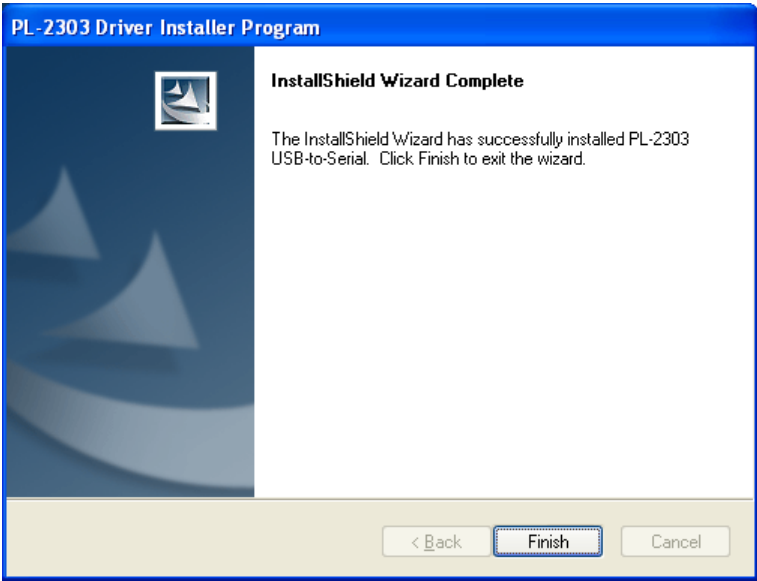


If USB to Serial port adapter is used, the USB drivers must be also installed. USB driver installation can be started from the following installation window by pressing **Install** button.

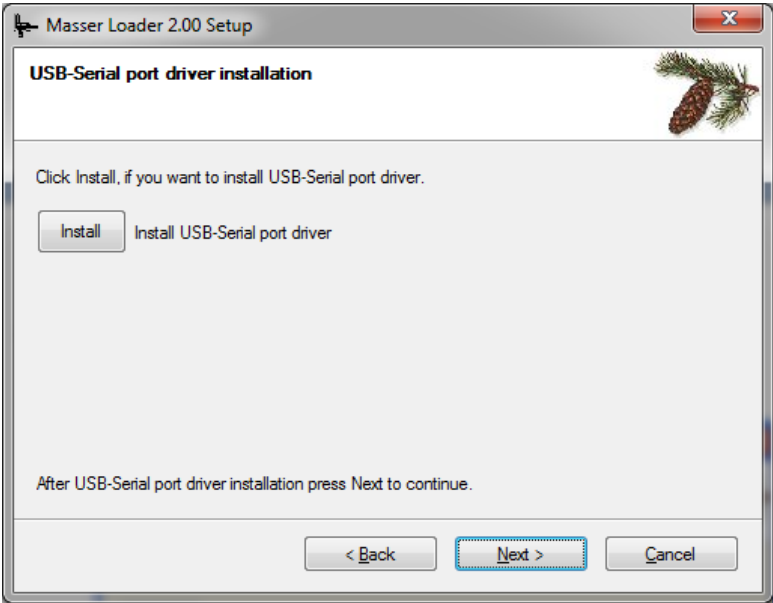
#### USB-Serial port driver installation.



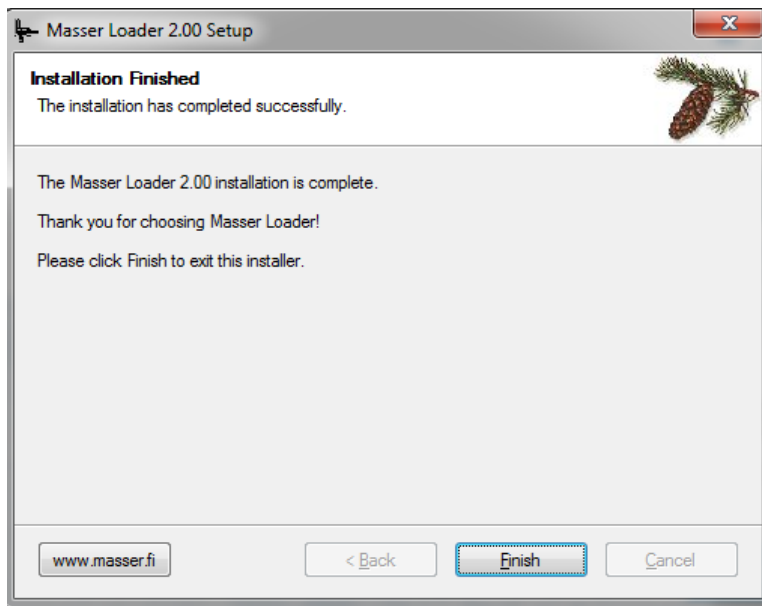
Press "Next" to continue.



USB - Serial port driver has been installed, press "Finish" to close installer program.



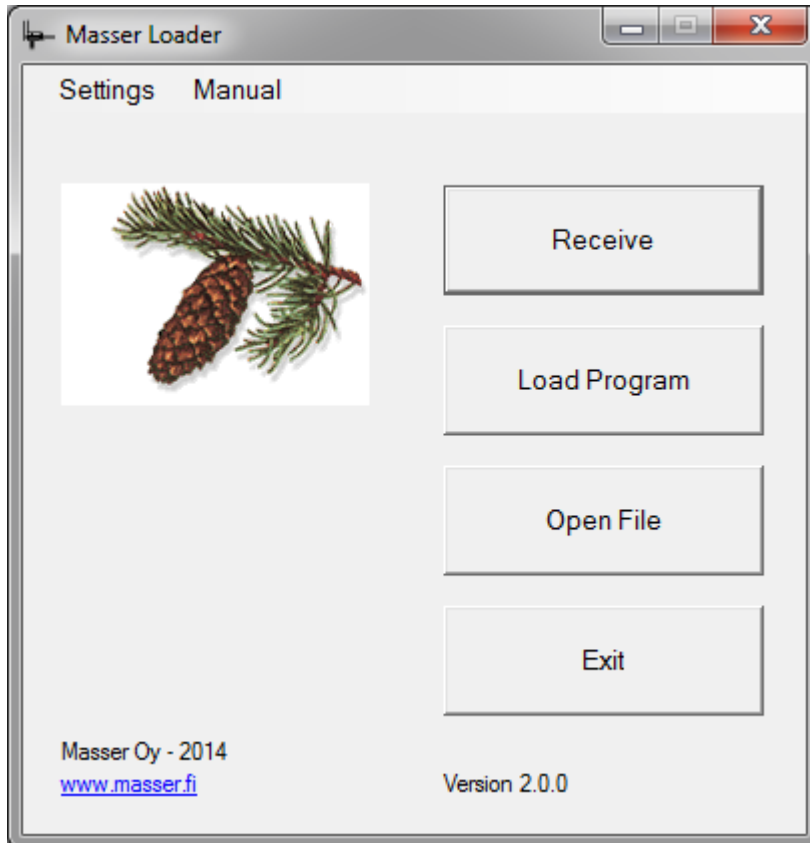
Press "Next" to continue Masser Loader installation.



Press "Finish" to close installer program.

## STARTING THE PROGRAM

If you use USB to Serial cable, then connect it before starting Loader.



**Receive**  
**Load program**  
**Open file**  
**Exit**

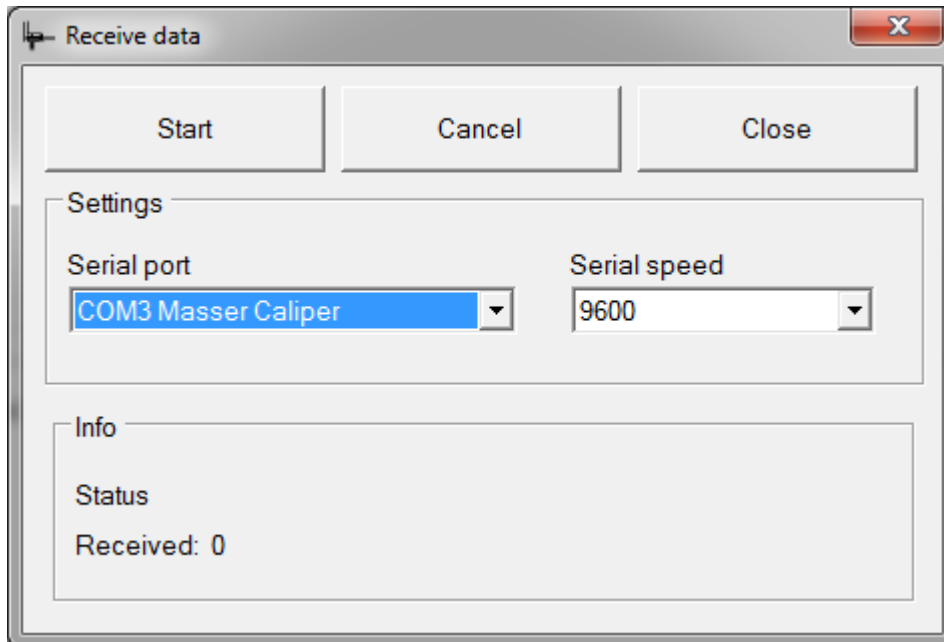
Receive the measurement data from the caliper into the PC  
Load program to the caliper  
Open previously transferred file  
Exit the software

**Settings**  
**Manual**

Opens Settings- menu  
User manual (needs Acrobat Reader- program installed)

## RECEIVE DATA FROM THE CALIPER TO THE PC

Select **Receive** from main window:



<b>Settings</b>	connection parameters
<b>Info</b>	transfer status and the number of received characters
<b>Start</b>	start receiving
<b>Cancel</b>	stop data transfer
<b>Close</b>	return to the main menu

Inside the Settings- frame user can define PC serial port and serial port speed. Speed setting must be the same as set in the caliper settings.

Info- frame shows the status of the transfer process. When Loader receives data status will be "Receiving" and Received-field shows the number of received characters.

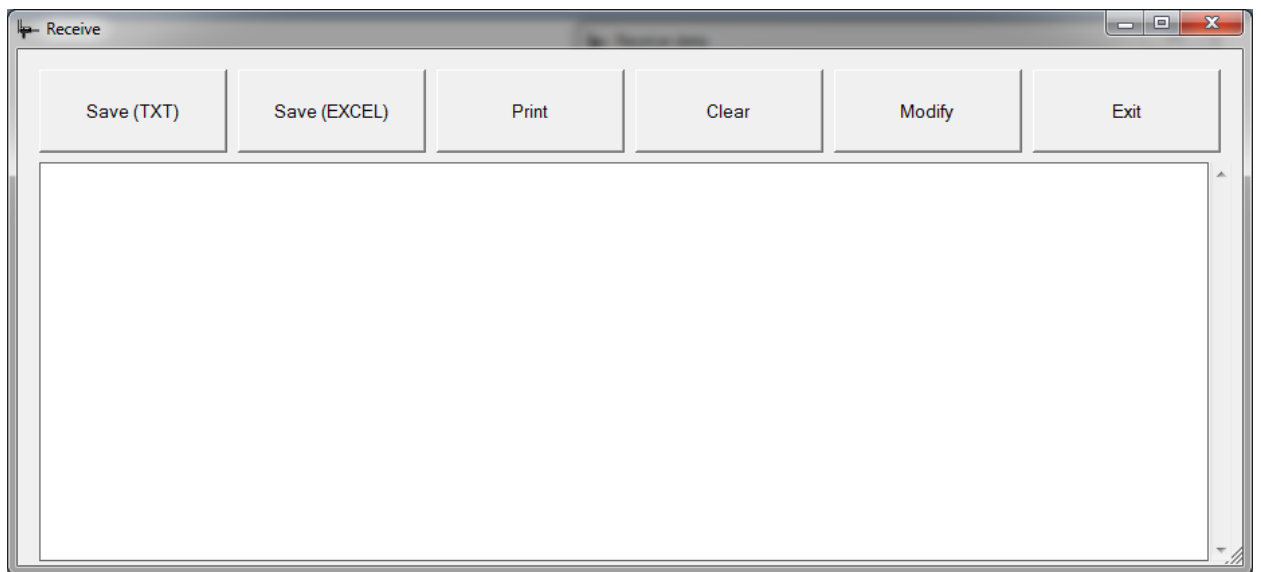
If the PC does not receive any data after the start or status shows "Wait", then the connection between PC and caliper is not ok. Check the cable connections and check that the serial speed is the same in both ends.

Receiving data from the caliper:

1. Start receiving by pressing "Start".
2. A New window "Receive" will open.
3. Start sending from the caliper.
4. Wait until all data has been received. Now you can store the data or print.



## Receive- window

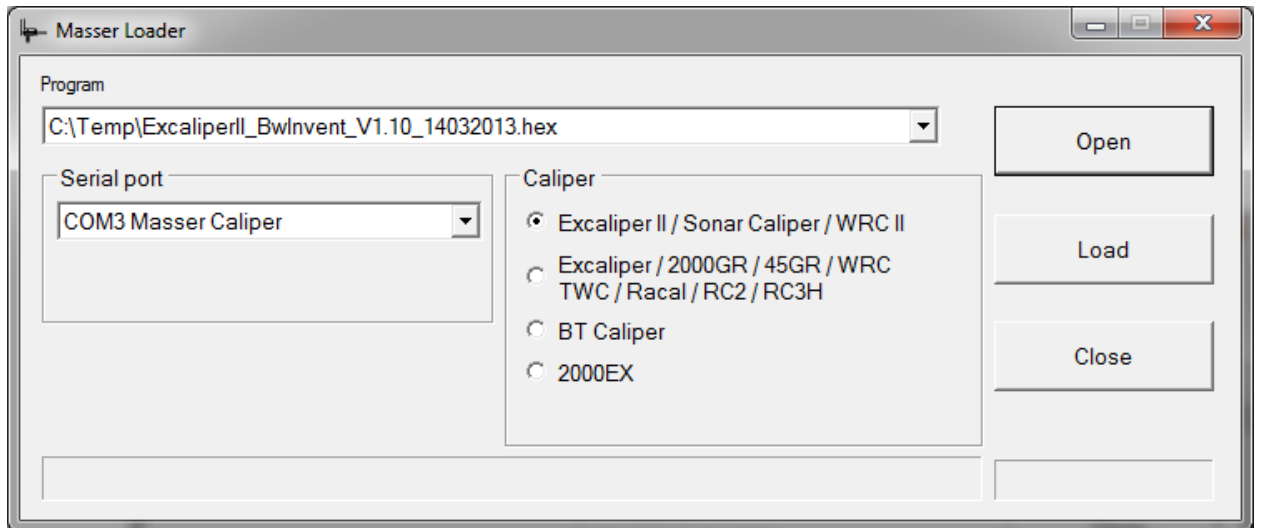


- |                   |  |
|-------------------|--|
| <b>SAVE (txt)</b> | Save the received data to txt-file   |
| <b>SAVE (xls)</b> | Save the received data in excel-format   |
| <b>PRINT</b>      | Send the received data to the printer  |
| <b>CLEAR</b>      | Clear the display (Erase the receive- table)   |
| <b>MODIFY</b>     | Set the receive display to edit mode. (modifying is possible when modify mode is active) |
| <b>EXIT</b>       | Return to main screen.   |

Same "Receive" window opens when "Open File" is selected from main window.

## LOADING A NEW PROGRAM TO CALIPER

A new program can be loaded into the caliper by selecting **Load Program**.



<b>Program</b>	Browse the program which you want to load (hex-file)
<b>Serial port</b>	Selected serial port.
<b>Caliper</b>	Type of the caliper.
<b>Load</b>	Starts the program loading.
<b>Open</b>	Select the program you want to load.
<b>Close</b>	Returns to the main menu.

Program list (Program) shows all earlier loaded programs. By pushing ▼ –button, Loader shows all listed hex-files. By clicking the hex-file it will be selected.

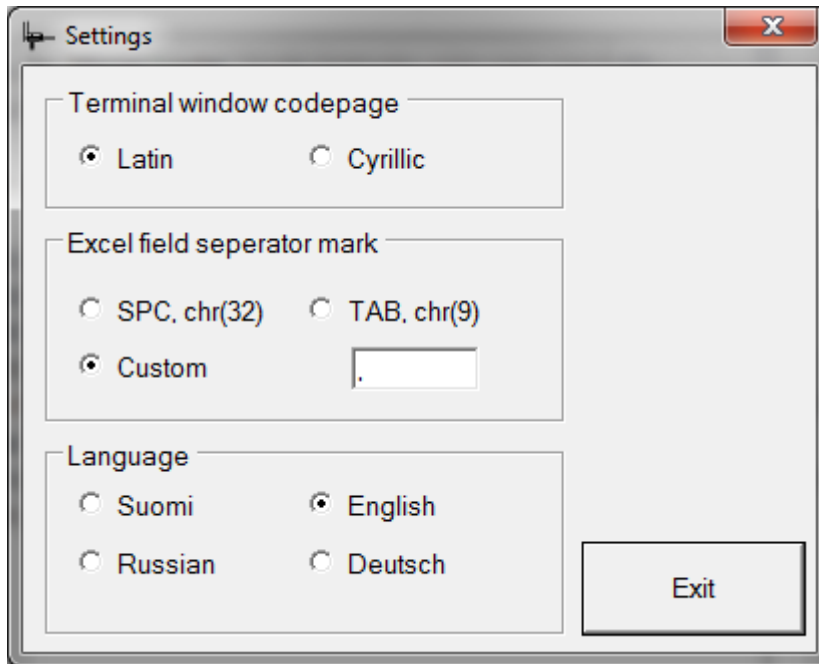
If the wanted program is not on the list, click the **Open**- button. This opens the PC folder window. Select the right program by clicking the name.

Loading a program to the caliper:

1. Select program from the list or press “Open” if program is not on the list
2. Select the serial port
3. Select the caliper model
4. Check that a cable has been connected between the PC and the caliper.
5. Choose INSTALL from the caliper. (Caliper program installation is explained in calipers user manual)
6. Start loading from the PC clicking the Load-button.

This working order is essential. The caliper must be set to wait the program before starting to load from the PC.

## SETTINGS



### Terminal window codepage

Select the character code set to be used in Transfer-window

### Excel delimiter

Select the delimiter to be used in Excel- table. In the Custom-field user can input the used character (ex. , or ;)

### Language

Loader language selection.