

MASSER RACAL II

Program update User manual



MASSER LOADER

Update new caliper program versions with the **Masser Loader** PC-program. Download Masser Loader installing program from the Masser Oy webpage. The latest version of the Masser Loader -PC program and the user manual are available at the web address:

<http://www.masser.fi/support/>



Masser Loader PC-software ver 3.0.2



Masser Loader PC-software user manual v3.0.0

Masser Loader – installing PC program

Do not connect the USB-adaptor or serial cable to the PC before installation is ready. USB-adaptor and serial cable driver are installed with the Masser Loader PC program. Cable driver installation might require to restart the PC. Save open files and close other PC-programs before reboot!

Download and save the Masser Loader setup application (masser-loader-v302.zip). Extract the folder to the PC.

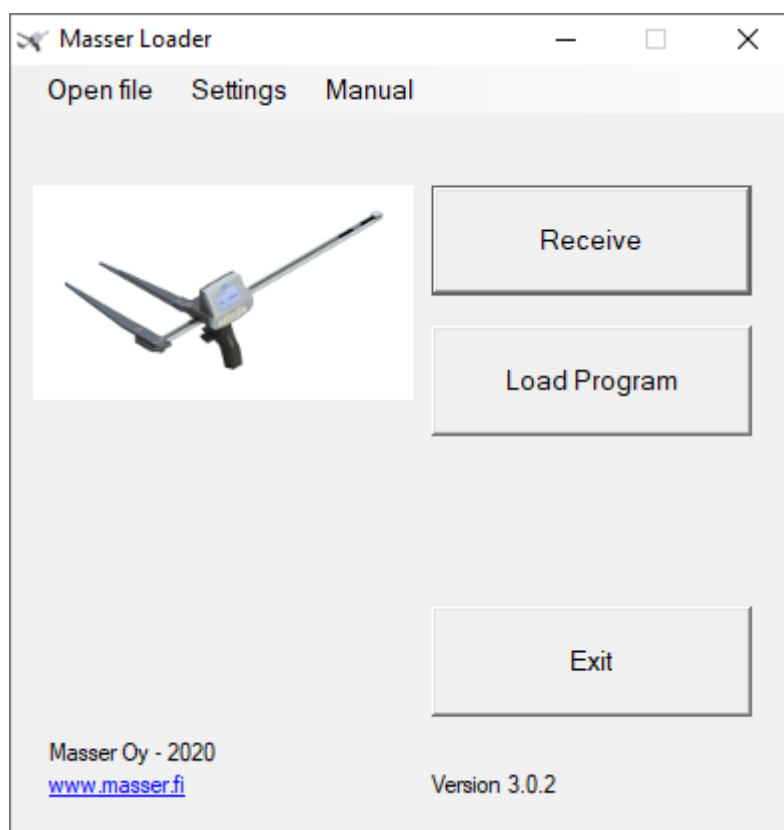
Name	Type
manuels	File folder
programs	File folder
usb_drivers	File folder
MasserLoader_V3.0.2_Setup_18062020.exe	Application

Start and run Masser Loader setup application by clicking EXE-file. Follow the setup instructions until installation is ready.

Program main menu and functions

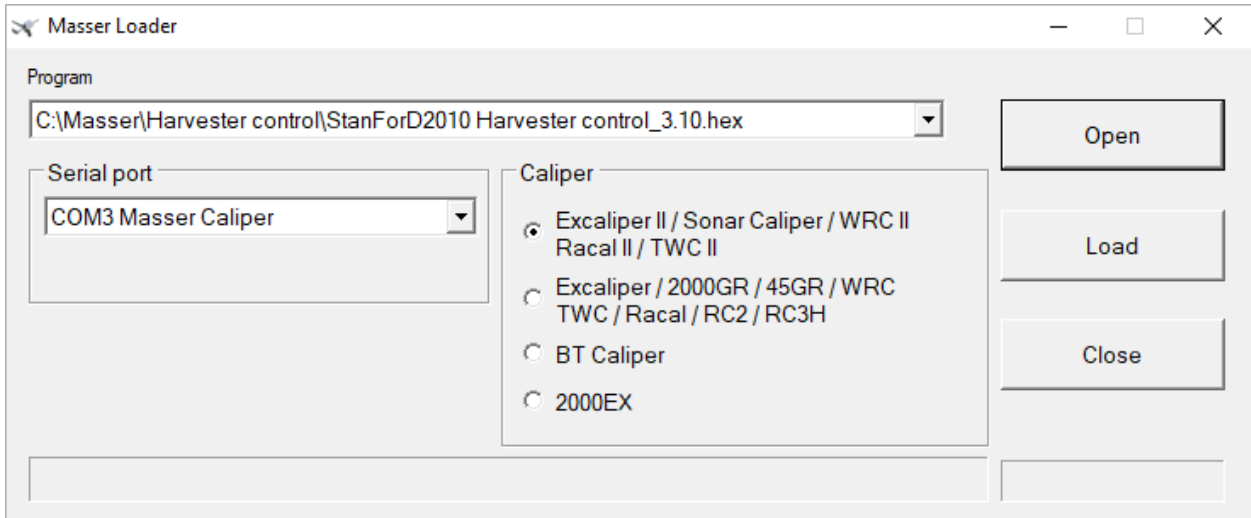
Connect the caliper to the PC with USB-adapter serial cable. USB-adapter and serial cable port (COM) are identified and selected automatically on Masser Loader - program. Serial port is named *COM(X) Masser Caliper*.

Start **Masser Loader** program from the desktop icon. Program will open the main menu.



Update caliper software

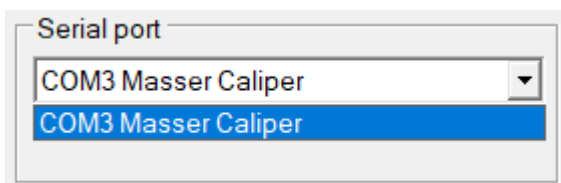
Select **Load Program** from Masser Loader main menu. Program will open a separate loading window:



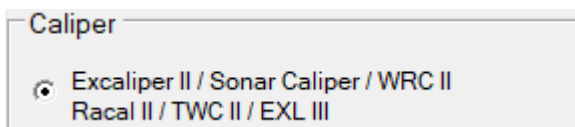
Open	Browse and select the caliper program for update
Load	Load selected program to the caliper
Close	Close window and return to main menu

Updating a caliper program:

1. Select the caliper program (.HEX-file) with “*Open*” or choose program from the “*Program*” drop-down menu. Program will save the previously updated program file paths to the list.
2. Select the right serial port.



3. Select the right caliper model from Caliper options (Racial II).



4. Set the caliper ready for the program update.

First, switch off the caliper.

Press **Toggle switch (1)** upwards and hold it up during the caliper start. Hold up toggle switch and press the **[ENTER]-button (2)**.



Release **[ENTER]-button** and select **INSTALL** with the toggle switch. Press **[ENTER]**. Caliper is now ready for the program update. On the screen reads *“WAITING: Press ENTER to abort”*.

5. Start program update from Masser Loader. Press *“Load”*.

Once program is updated, Masser Loader will show notification *“Loading is ready!”*. Press **[ENTER]** on the caliper to start updated caliper program.

6. Close Masser Loader PC-program after the caliper program is updated. Press *“Close”*.

CONTACT INFORMATION

MASSER OY

Norvatie 4
FIN-96910 ROVANIEMI
FINLAND

Tel + 358 400 904 500
email: masser@masser.fi

www.massser.fi

